

UCM Server Setup  
Oracle FLEXCUBE Universal Banking  
Release 14.3.0.0.0  
[May] [2019]



---

# Table of Contents

- 1. INTRODUCTION ..... 1-1**
  - 1.1 BACKGROUND ..... 1-1
  - 1.2 ORGANIZATION OF THE DOCUMENT ..... 1-1
  - 1.3 ACRONYMS AND ABBREVIATIONS ..... 1-1
- 2. PREREQUISITES ..... 2-1**
  - 2.1 CREATE REPOSITORY IN ORDER TO CONFIGURE THE APPLICATION ..... 2-1
- 3. UCM SERVER SETUP ..... 3-1**
- 4. CONFIGURING THE ECM APPLICATION SERVER: ..... 4-1**
  - 4.1 INTRODUCTION ..... 4-1
  - 4.2 NEW DOMAIN CONFIGURATION ..... 4-1
- 5. CHECKING THE DEPLOYMENT SUMMARY ..... 5-1**
- 6. CREATING FLEXCUBE APPLICATION ..... 6-1**

---

# 1. Introduction

## 1.1 Background

This document provides an overview of setting up the UCM server for capturing of all documents received from/given to customer in a central content management repository. Oracle documentation are to be referred for HA and other configuration patterns.

## 1.2 Organization of the Document

The first chapter of this document gives an introduction with brief background and organization of the document.

Subsequent chapters of this document will give the implementation details.

## 1.3 Acronyms and Abbreviations

UCM	Universal Content Management
IPM	Imaging and Process Management
RCU	Repository Creation Utility

---

## 2. Prerequisites

Oracle Weblogic 11gR1 (10.3.5)

Download Oracle Weblogic from Oracle Website. This is available for reference at

<http://www.oracle.com/technetwork/middleware/ias/downloads/wls-main-097127.html>

1. Download based on your needs (Windows/Linux/Generic).
2. The installation process might slightly vary depending on the platform / mode if installation (package/net).
3. Run the wls1035\_oepe111172\_win32.exe

### 2.1 Create Repository in order to Configure the Application

Oracle Repository Creation Utility (RCU) is used to create schemas that are required for UCM server Installation.

1. Install Database.
2. Download Repository Creation Utility

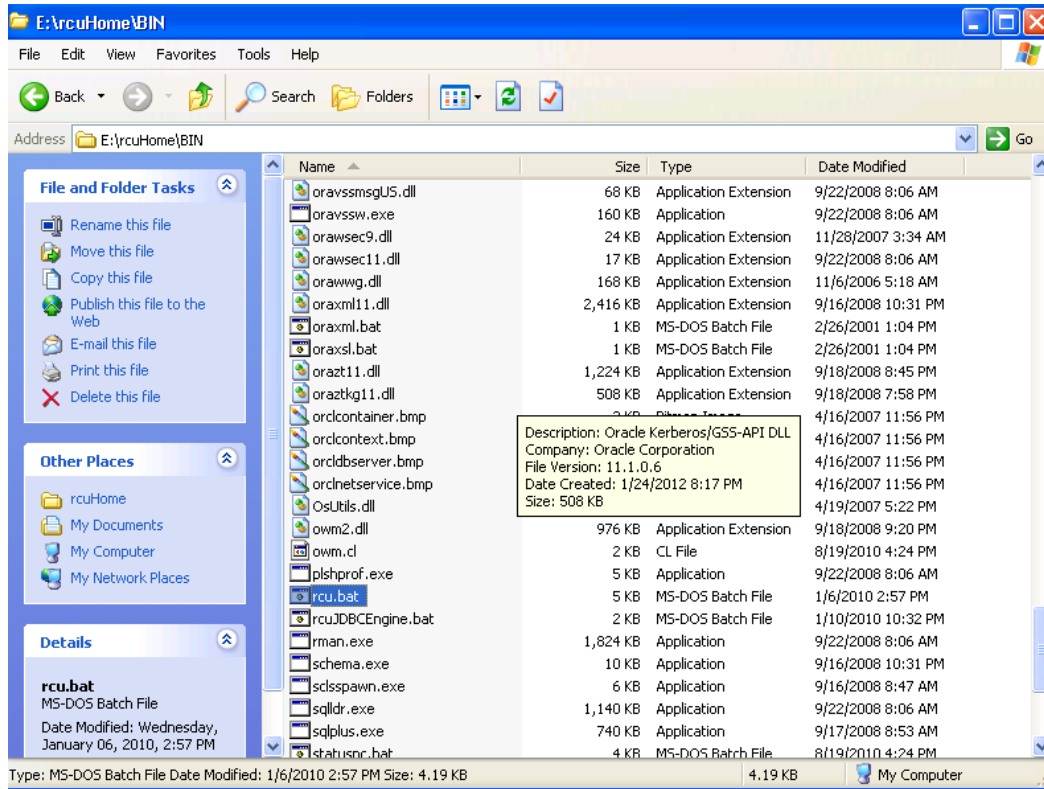
<http://www.oracle.com/technetwork/middleware/soasuite/downloads/index.html>

3. Navigate to the directory into which RCU is installed. For Example

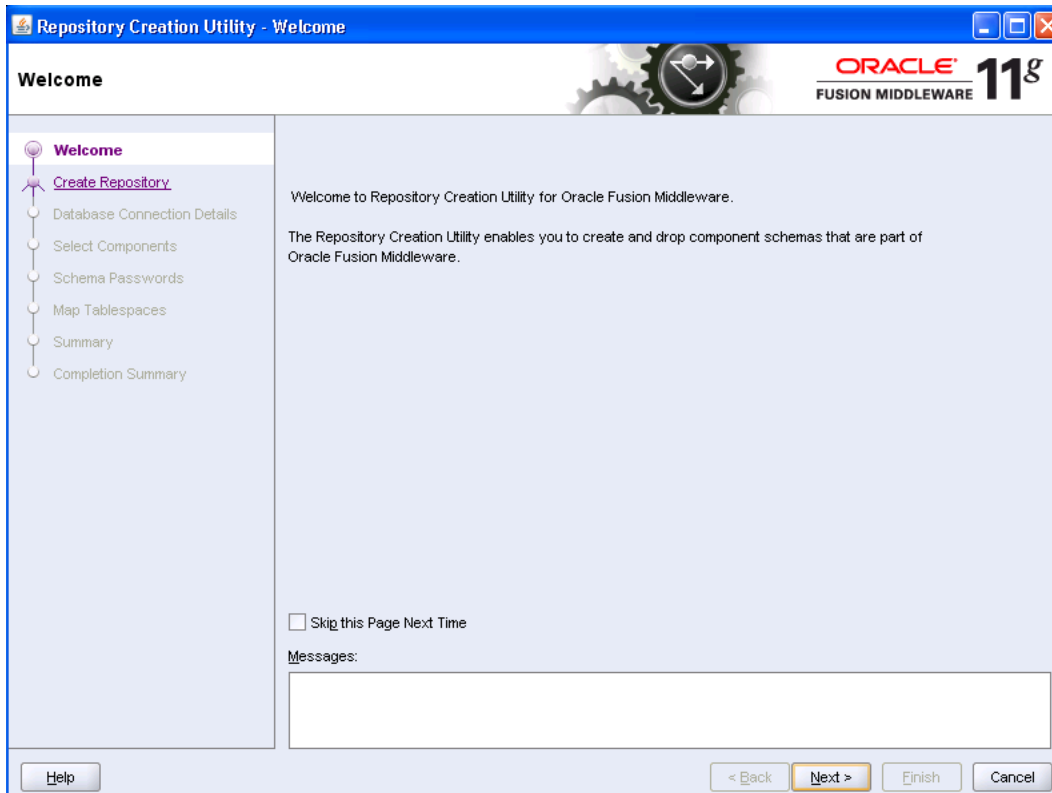
<rcu\_home>\BIN

Note: rcu\_home is the directory in which RCU is installed.

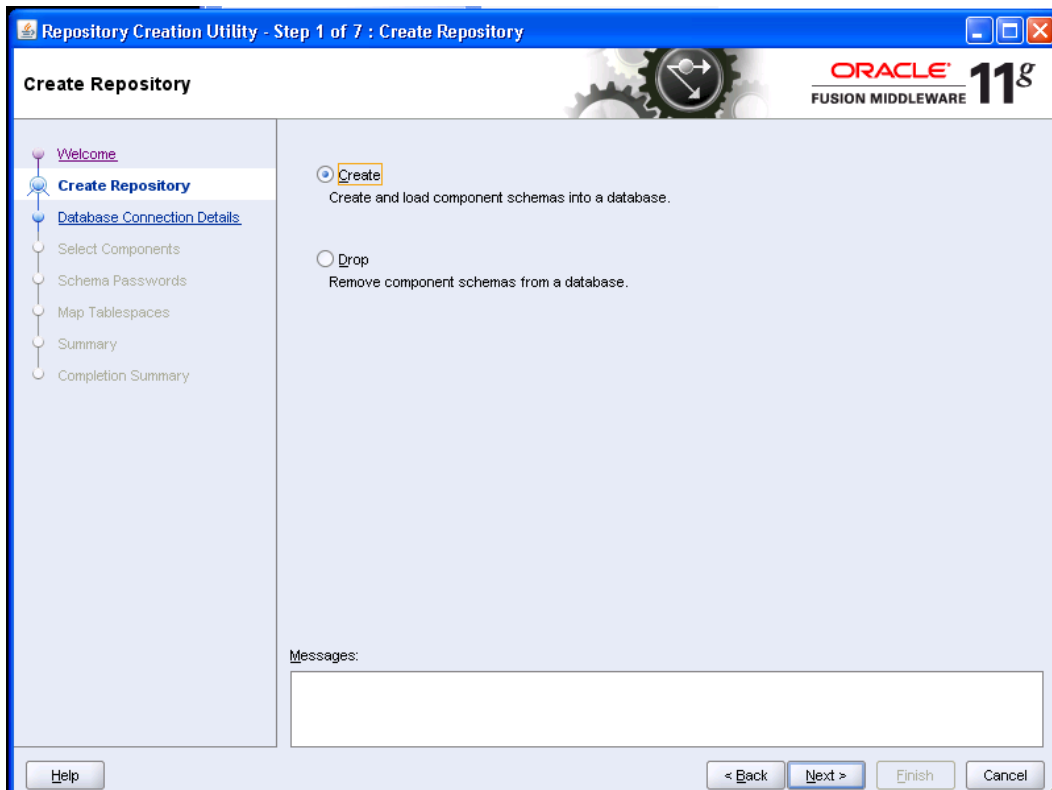
4. Click on rcu.bat file to create the repository.

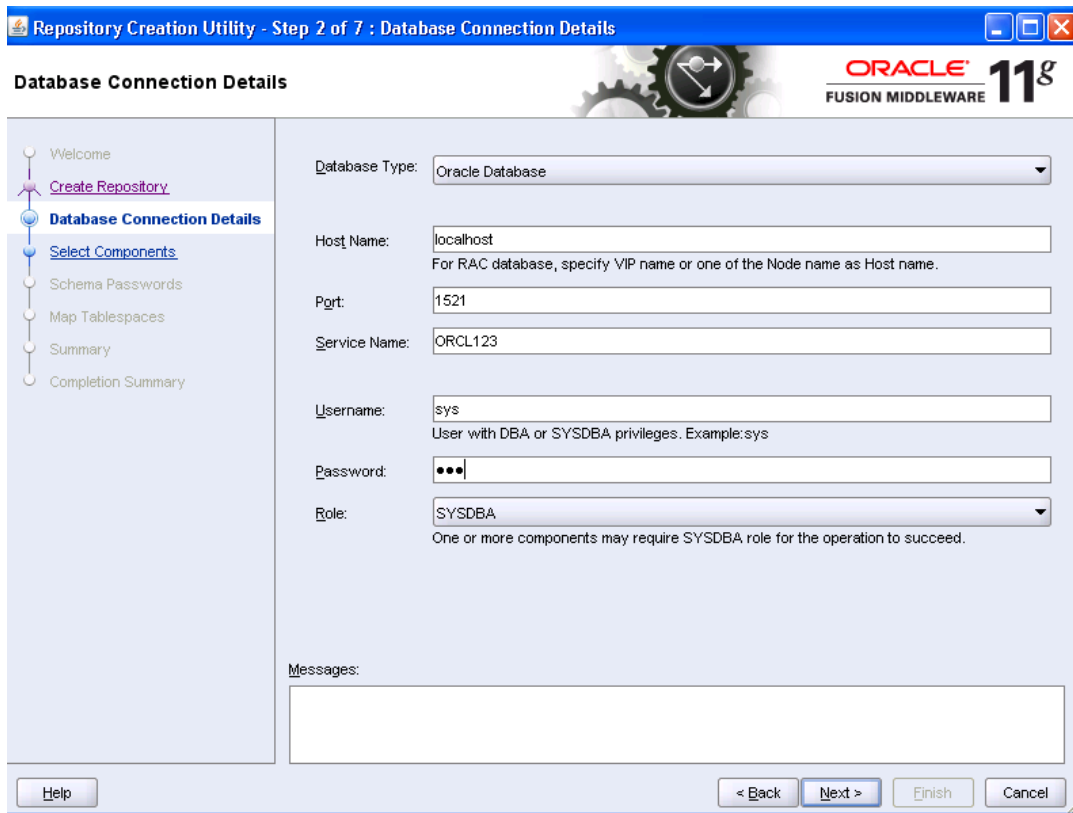


The Repository Creation Welcome Screen appears.

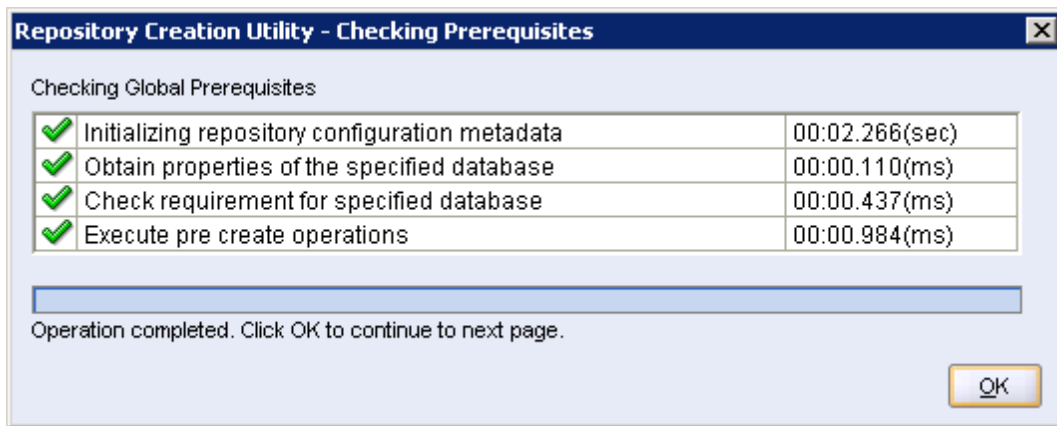


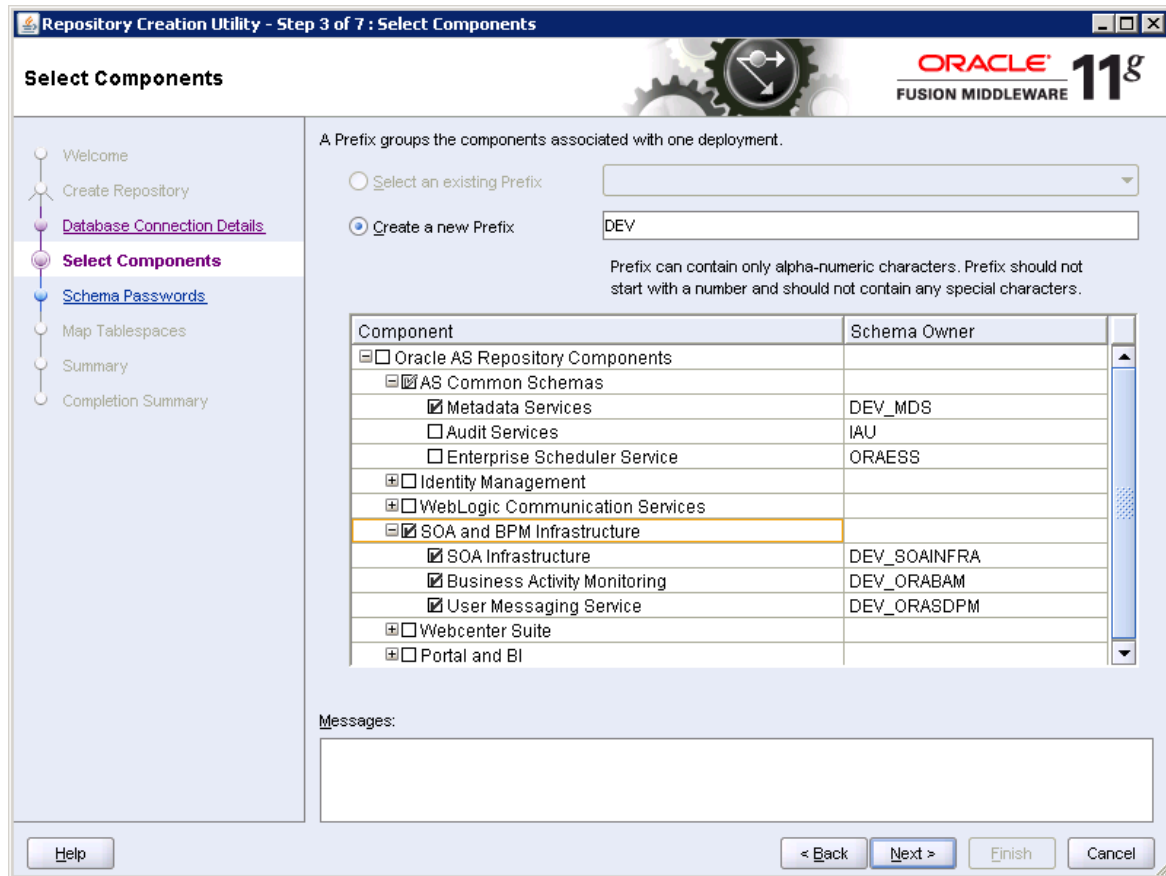
5. Select create and then click 'Next'.





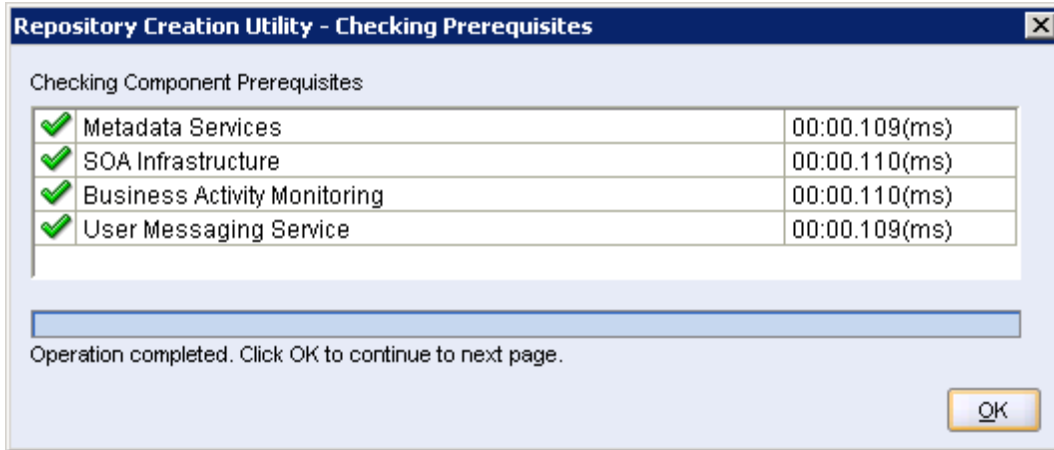
6. Provide oracle database connection properties
7. SYS credentials are required.



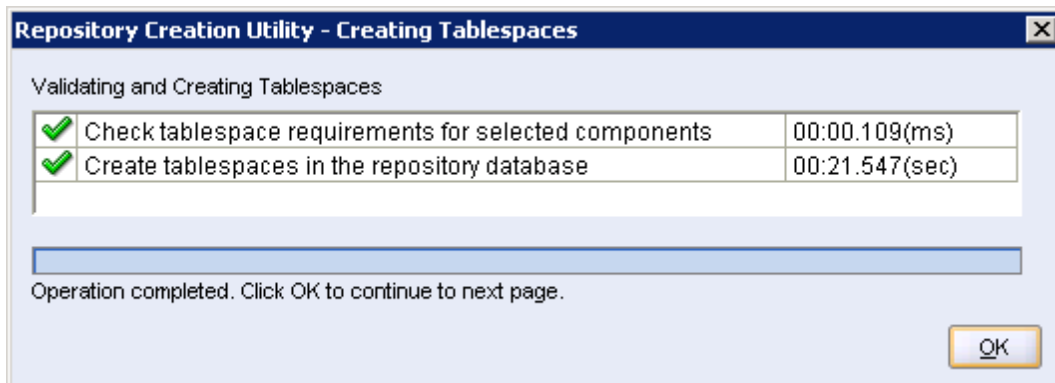
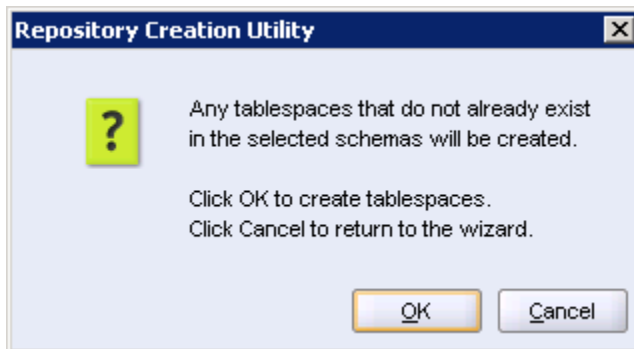


8. The prefix option is provided so that multiple soa schemas can be in the same instance.
9. Select Enterprise Content Management
  - DEV\_OCS
  - DEV\_OCSSEARCH
  - DEV\_IPM

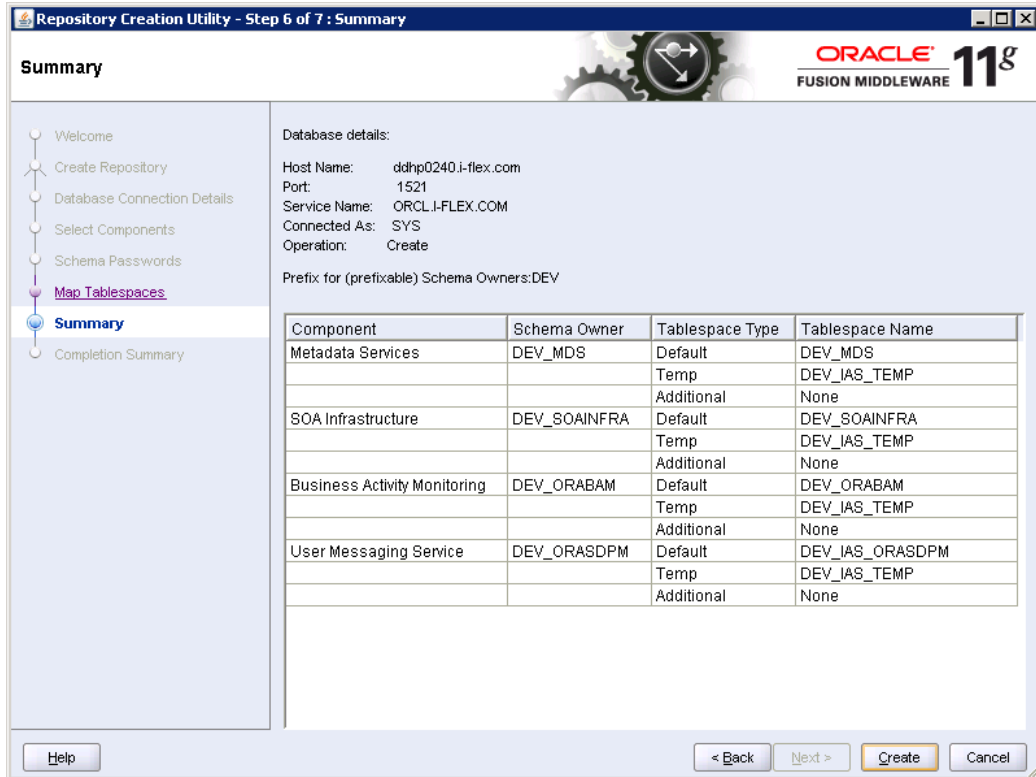




10. Please make a note of the password / passwords being used.



11. Tablespaces creation.



12. Summary.

Repository Creation Utility - Step 7 of 7 : Completion Summary

**Completion Summary**

ORACLE 11g  
FUSION MIDDLEWARE

Welcome  
 Create Repository  
 Database Connection Details  
 Select Components  
 Schema Passwords  
 Map Tablespaces  
 Summary  
**Completion Summary**

Database details:

Host Name: localhost  
 Port: 1521  
 Service Name: ORCL123  
 Connected As: sys  
 Operation: Create  
 RCU Logfile: E:\rcuHome\rcu\log\logdir.2012-03-05\_11-57\rcu.log  
 Component Log Directory: E:\rcuHome\rcu\log\logdir.2012-03-05\_11-57  
 Execution Time: 37 seconds  
 Prefix for (prefixable) Schema Owners:DEV11

Component	Status	Logfile	Time
Oracle Content Server 11g - Complete	Success	contentserver11.log	00:08.229(sec)
Oracle Content Server 11g - Search Only	Success	contentserver11search.log	00:00.983(ms)
Oracle Imaging and Process Management	Success	ipm.log	00:01.953(sec)

Help < Back Next > Create Close

13. Completion Summary.

## 3. UCM Server Setup

1. Download Oracle Webcenter Content 11gR1 (Version: 11.1.1.5.0), formerly known as (Oracle Enterprise Content Management) from

<https://sac.us.oracle.com/download/index.html>

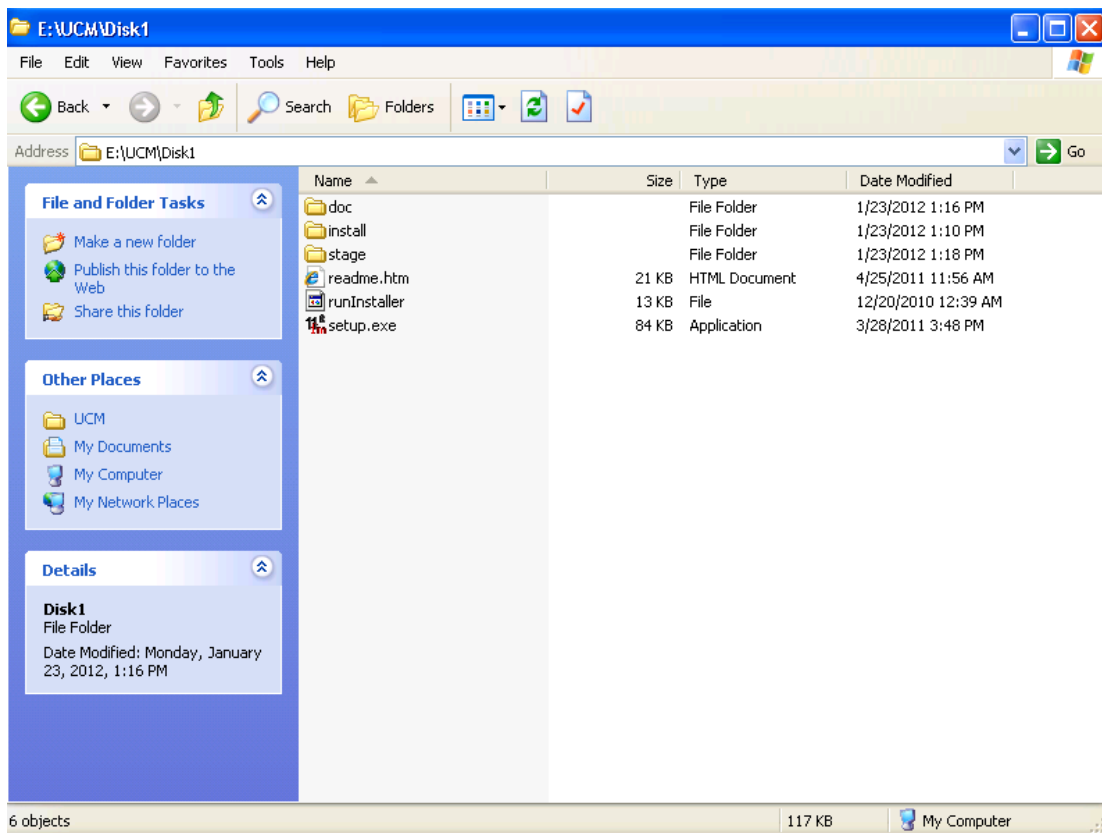
2. At the right top corner there is a search box, search for string <11.1.1.5>
3. Search for <Enterprise Content> in the result page and found a zip which is downloadable.
4. Download Enterprise Content Management.

[Oracle Enterprise Content Management 11g \(11.1.1.5.0\) \(zip file 1 of 2\)](#)

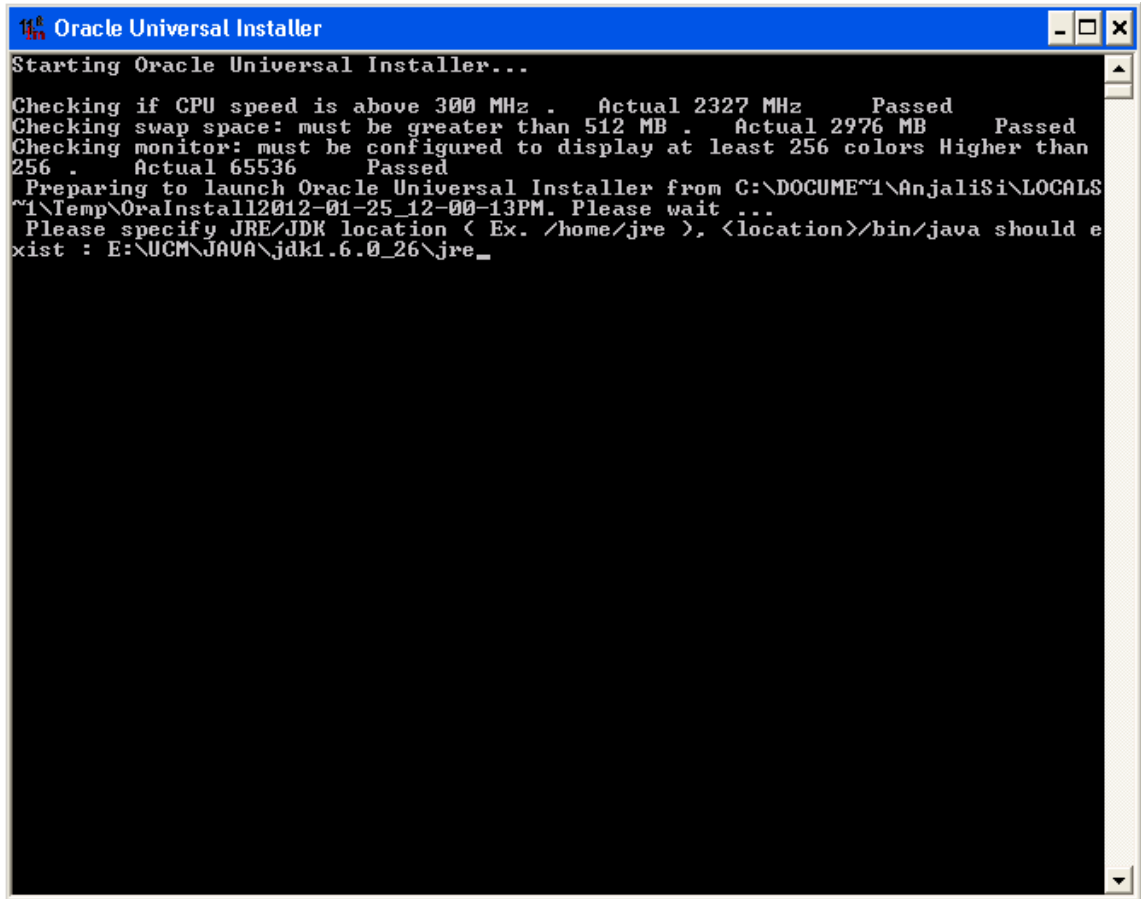
[Oracle Enterprise Content Management 11g \(11.1.1.5.0\) \(zip file 2 of 2\)](#)

It provides a FTP download. Select FTP server to download.

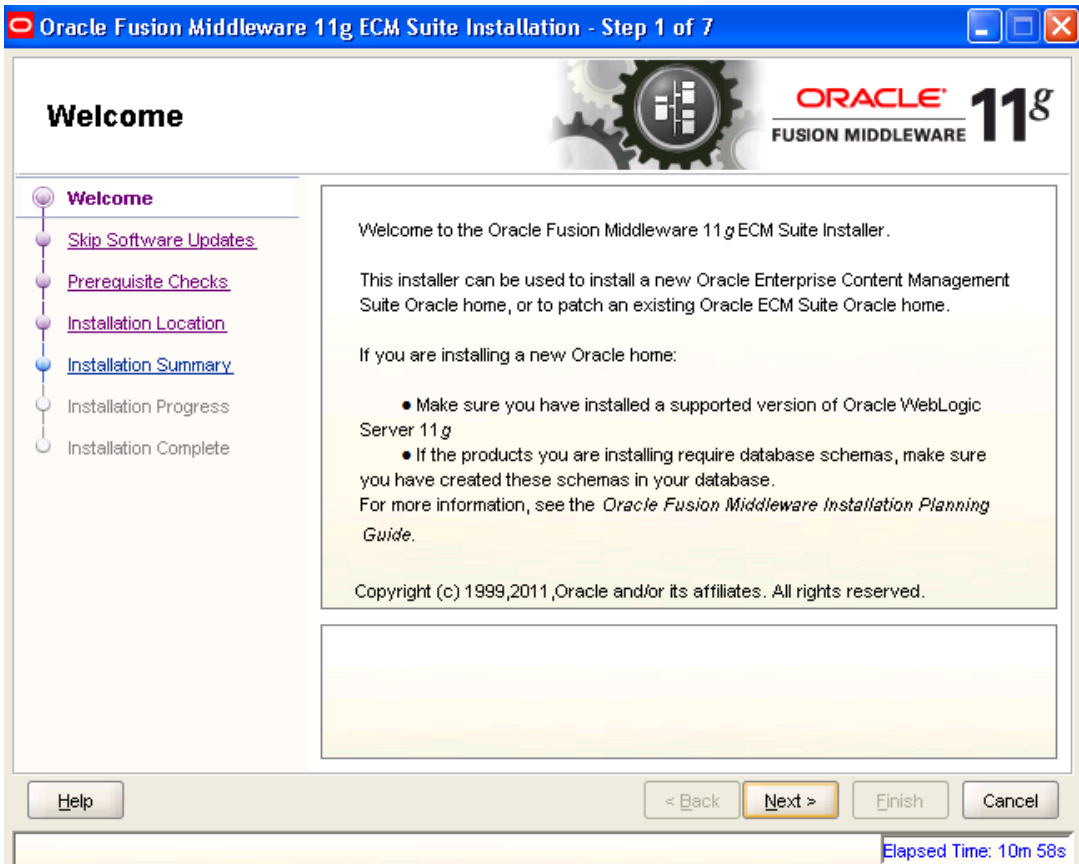
5. Extract all the files and install them on the server machine.



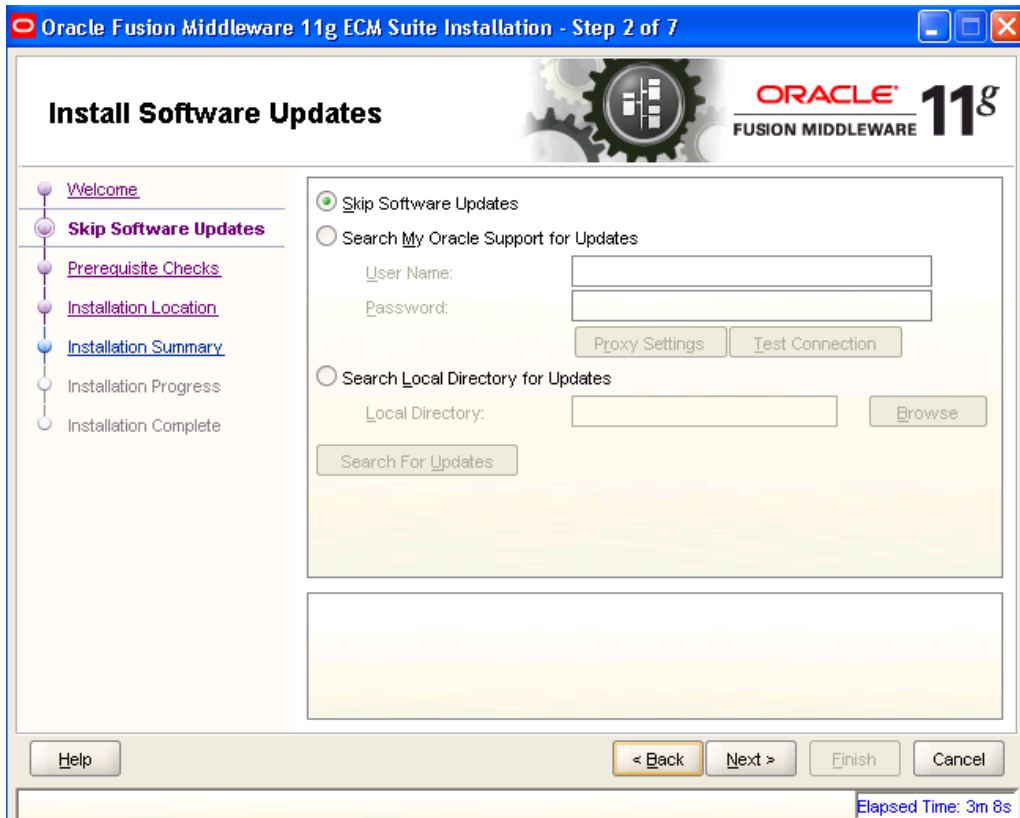
6. Click on Setup.exe available in Disk1. It will ask you for a JRE location. Specify the location as E:\UCM\JAVA\jdk1.6.0.26\jre.



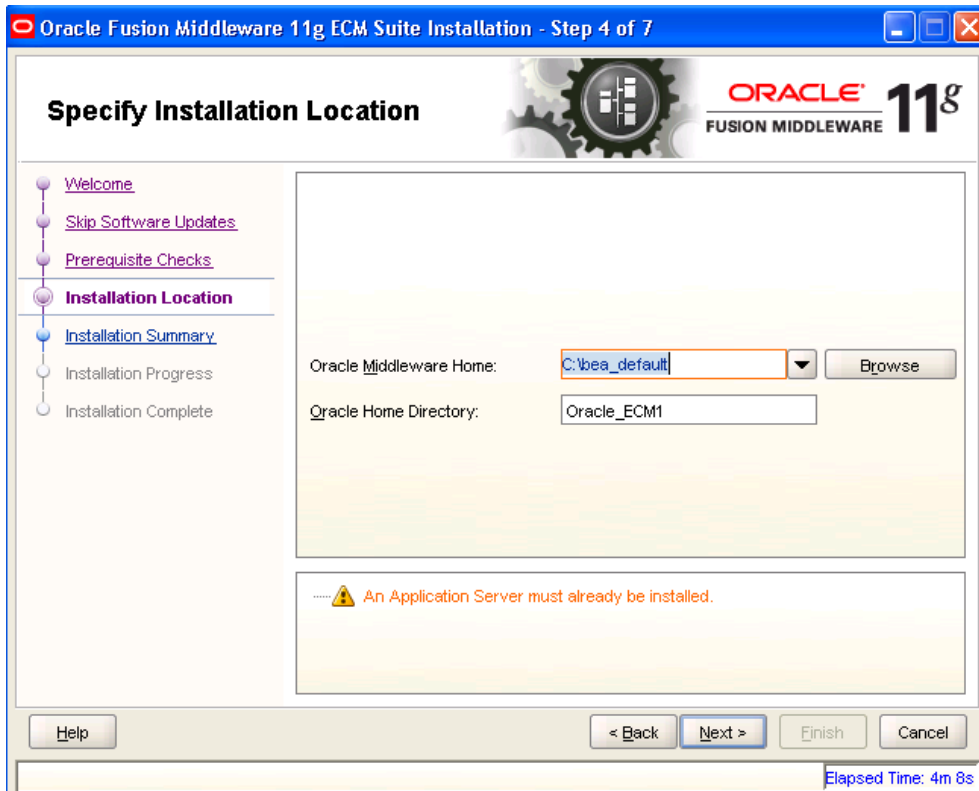
```
Oracle Universal Installer
Starting Oracle Universal Installer...
Checking if CPU speed is above 300 MHz . Actual 2327 MHz Passed
Checking swap space: must be greater than 512 MB . Actual 2976 MB Passed
Checking monitor: must be configured to display at least 256 colors Higher than
256 . Actual 65536 Passed
Preparing to launch Oracle Universal Installer from C:\DOCUME~1\AnjaliSi\LOCALS
~1\Temp\OraInstall2012-01-25_12-00-13PM. Please wait ...
Please specify JRE/JDK location ( Ex. /home/jre ), <location>/bin/java should e
xist : E:\UCM\JAVA\jdk1.6.0_26\jre_
```



7. Click 'Next' to navigate to skip software updates.

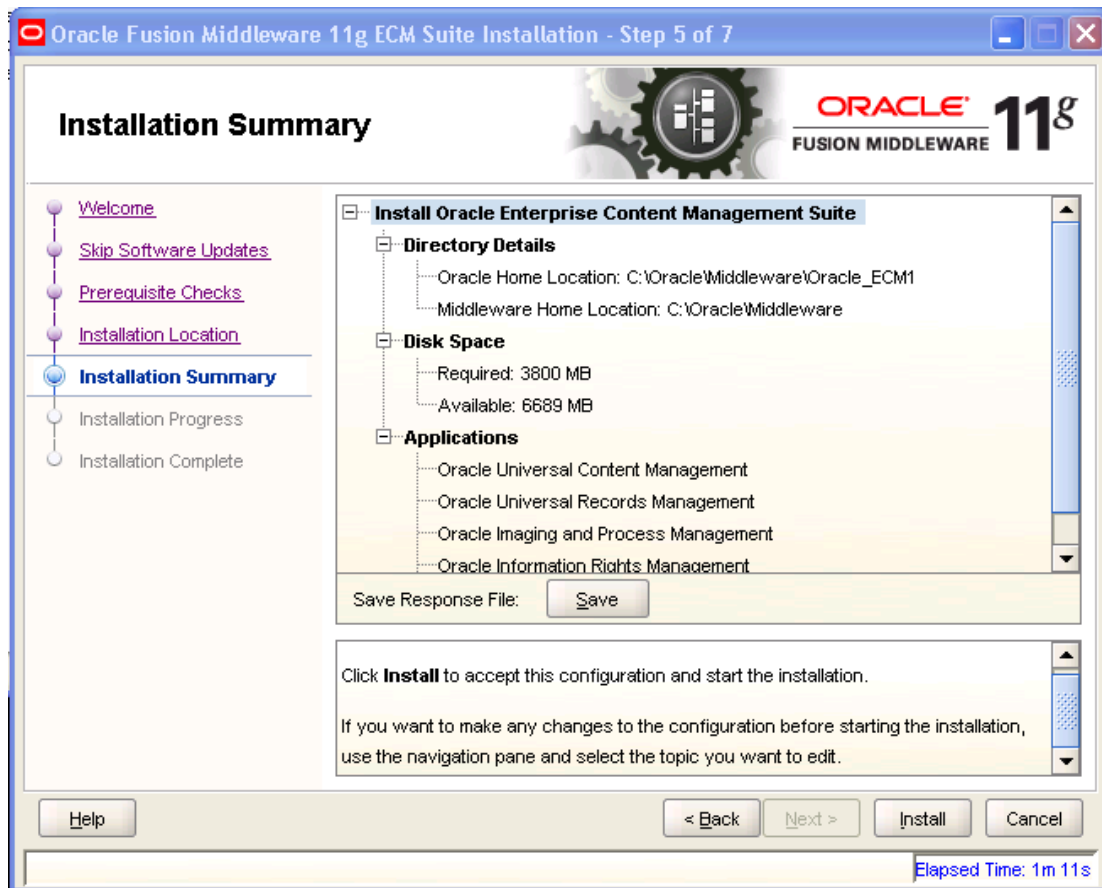


8. Click 'Next' to navigate to specify Installation Location.



9. Specify your Oracle Middleware home directory path and click next. Oracle Middleware version should be 10.3.5.






10. Click on Install button to accept this configuration and start the Installation.

Oracle Fusion Middleware 11g ECM Suite Installation - Step 6 of 7

### Installation Progress



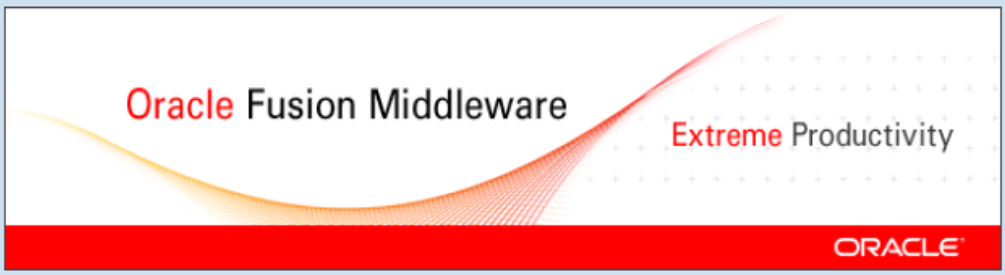
- Welcome
- Skip Software Updates
- Prerequisite Checks
- Installation Location
- Installation Summary
- Installation Progress**
- Installation Complete

Progress: 100%

Completed ..

Install Log C:\Program Files\Oracle\Inventory\logs\install2012-01-23\_04-30-59PM.log

Installation Successful.  
Starting execution of post install scripts  
Execution of post install scripts completed

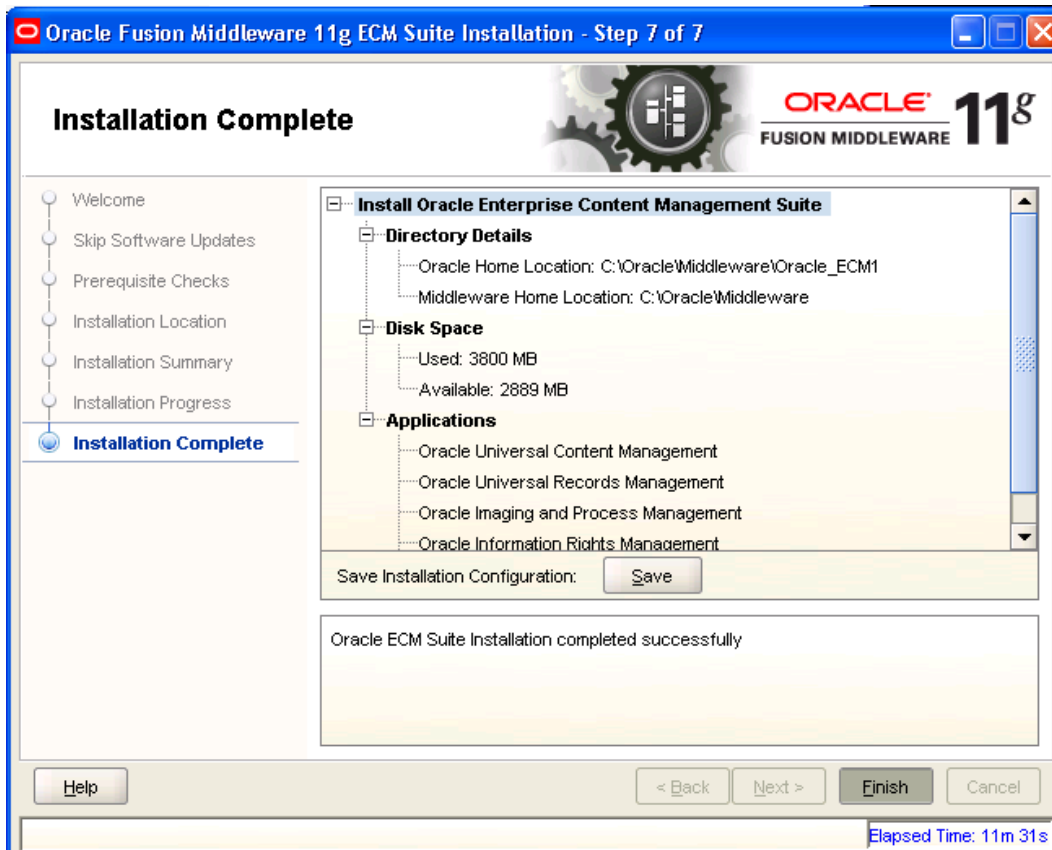


Oracle Fusion Middleware Extreme Productivity

ORACLE

Help < Back Next > Finish Cancel

Elapsed Time: 11m 16s



11. To verify the installation, Click on start, navigate to All programs and then to ECM 11g home.

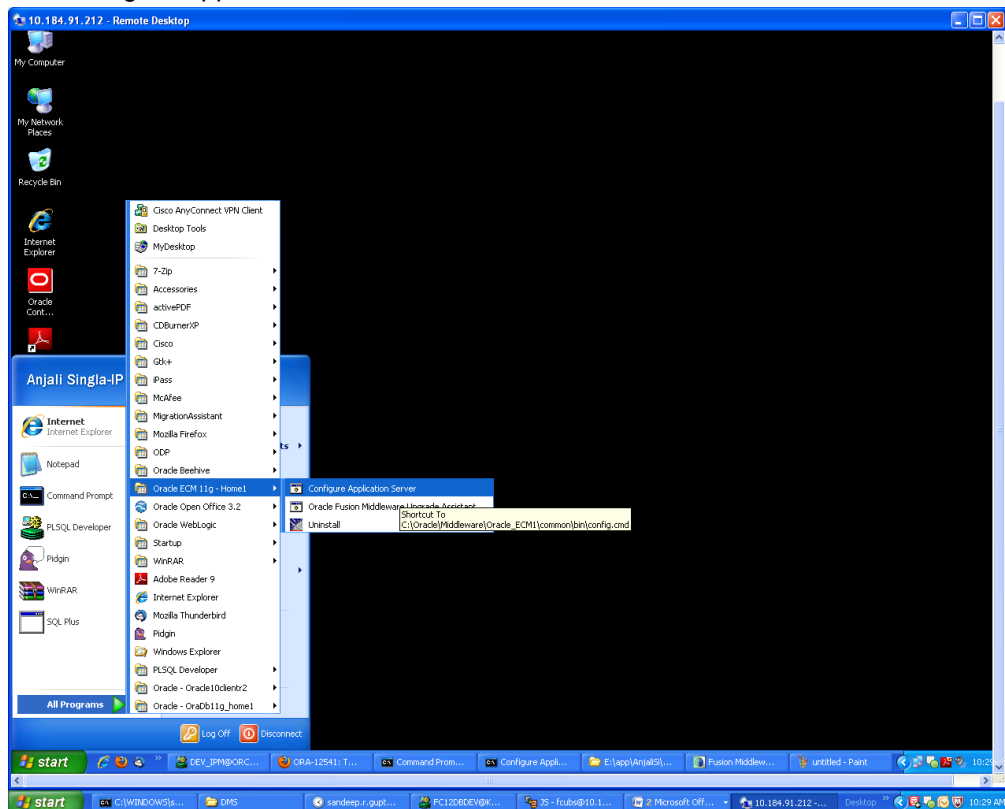
## 4. Configuring the ECM application server:

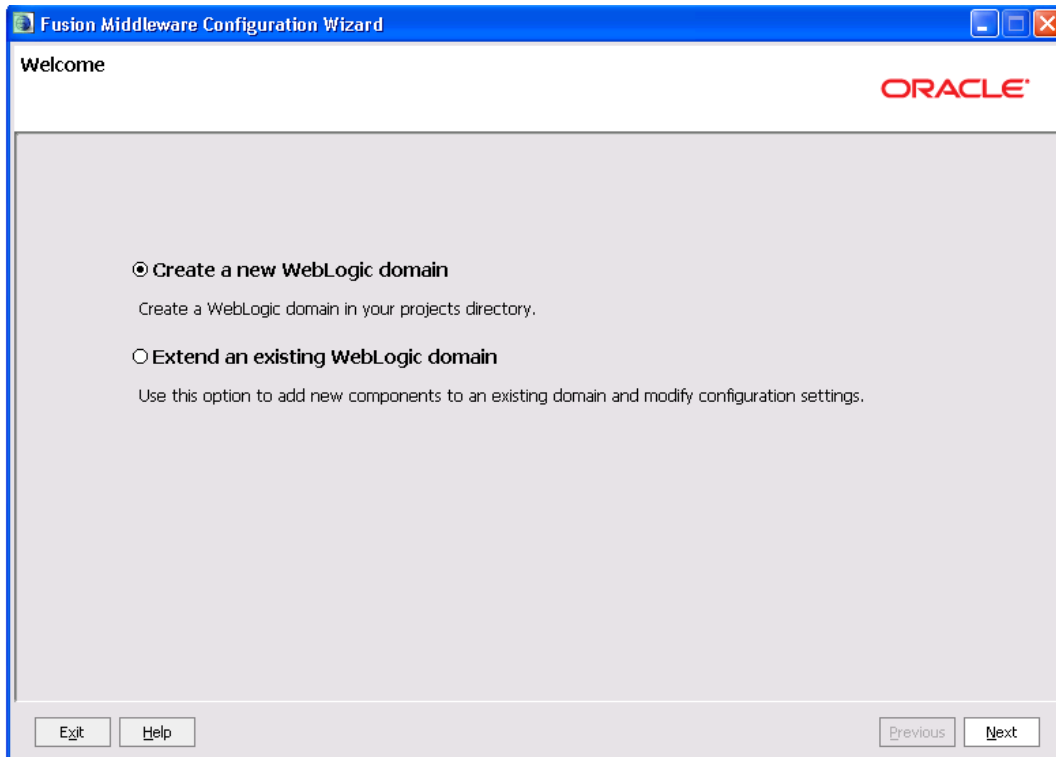
### 4.1 Introduction

New domain can be configured or an existing domain can be extended with Oracle ECM suite components.

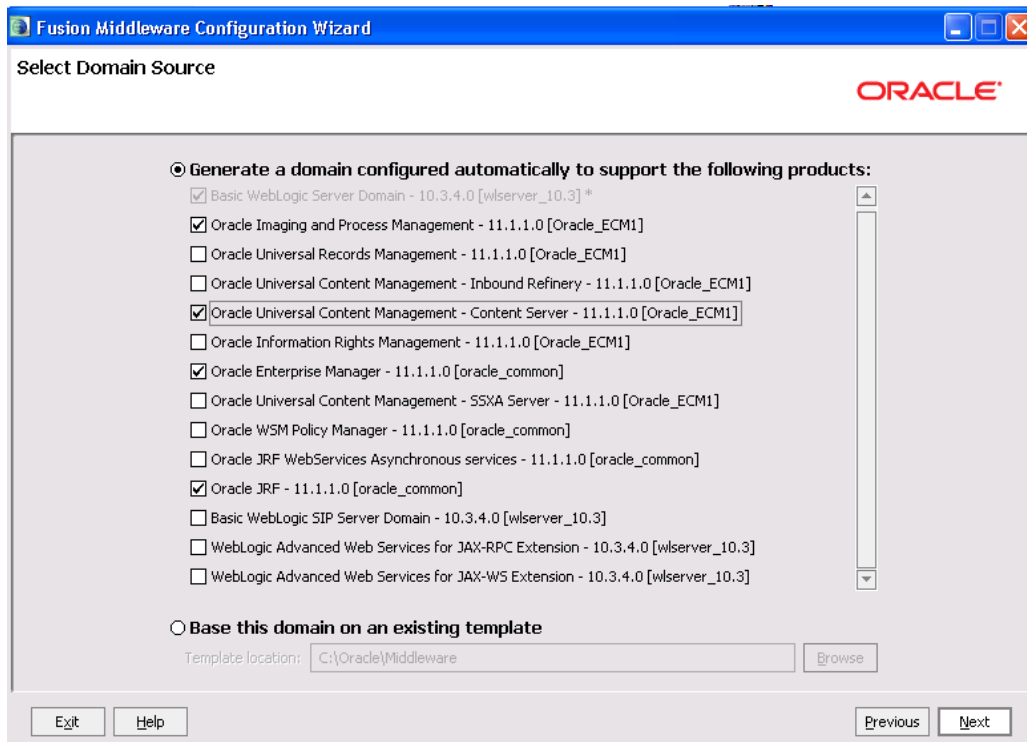
### 4.2 New Domain Configuration

1. Run Configure Application server.

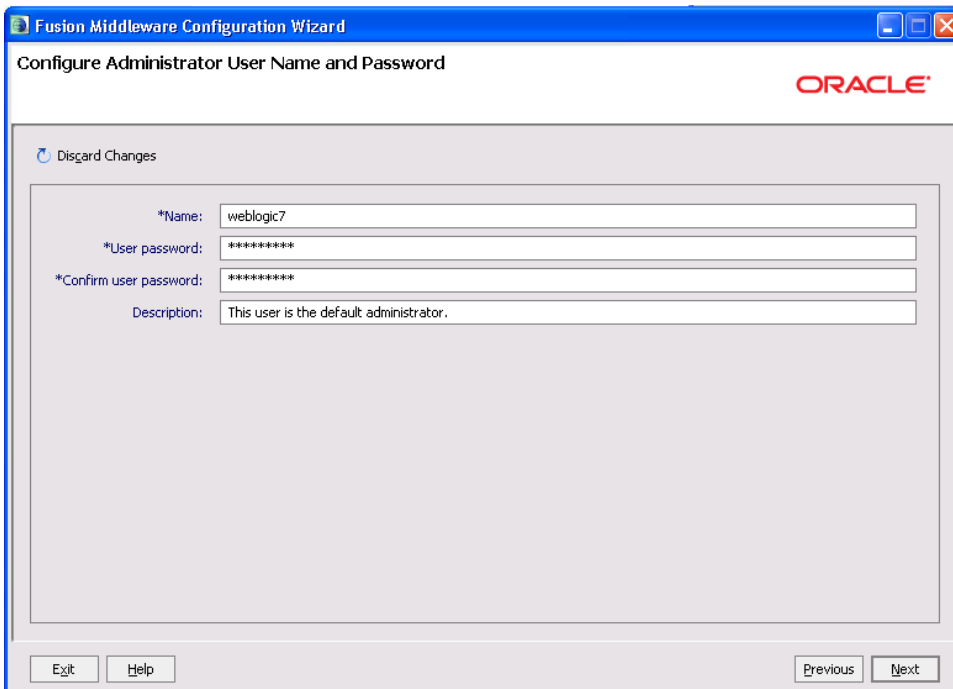
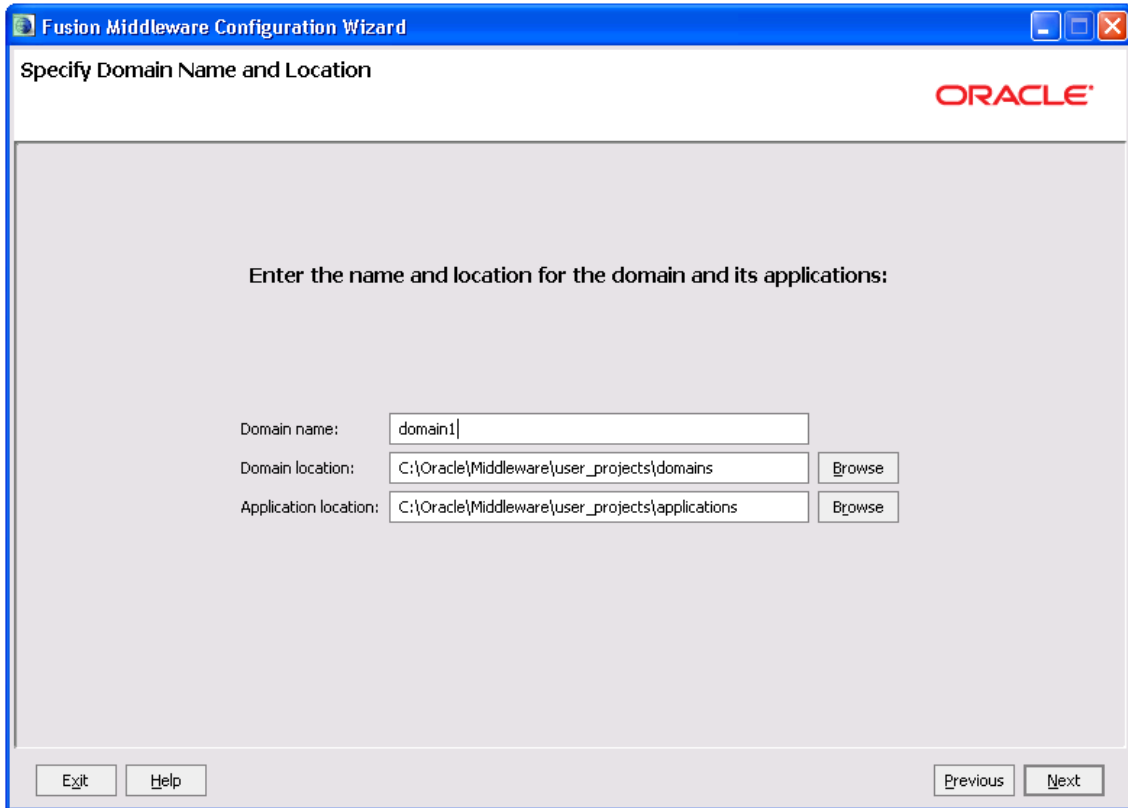




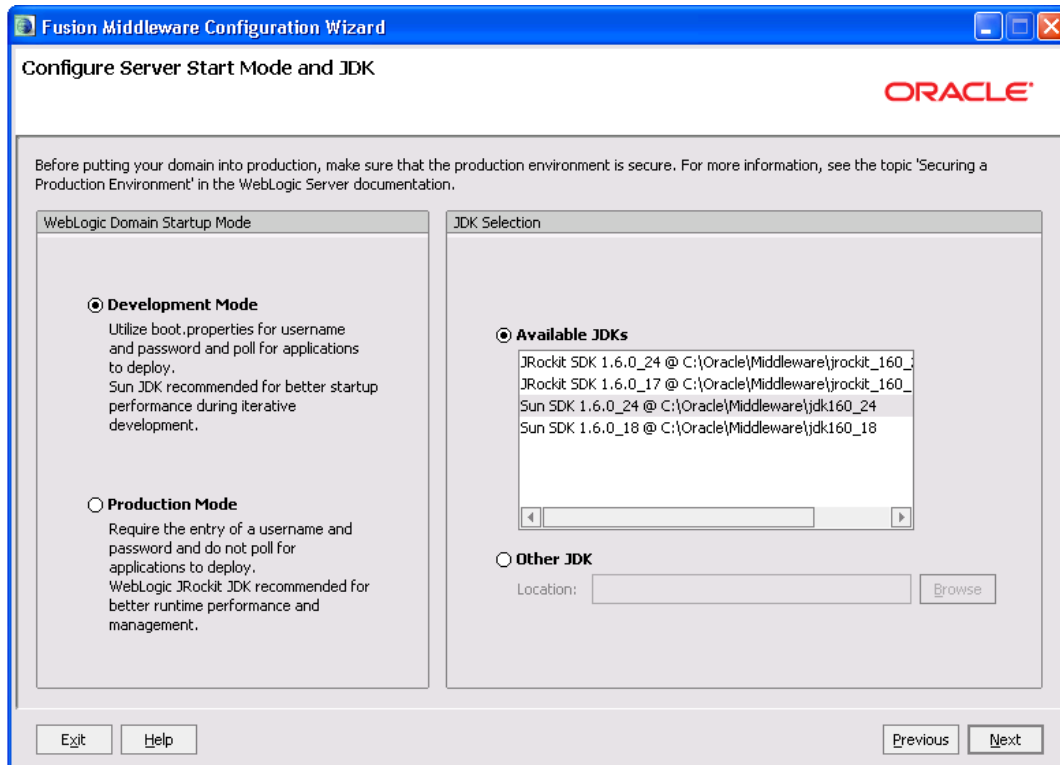
2. Create a new domain / extend an existing domain to include ECM suite components.



3. On selecting Oracle IPM and UCM (Content Server) it automatically selects Oracle Enterprise Manager and Oracle JRF.



4. Configure Administrator user / password.



5. Select jdk depending on the startup mode.

Fusion Middleware Configuration Wizard

### Configure JDBC Component Schema

ORACLE

**Note:** Change only the input fields below that you wish to modify and values will be applied to all selected rows.

Vendor: Oracle DBMS/Service: Varies among component schemas  
 Driver: \*Oracle's Driver (Thin) for Service connections; Versions:9.0.1 and later Host Name: localhost  
 Schema Owner: Varies among component schemas Port: 1521  
 Schema Password: \*\*\*\*\*

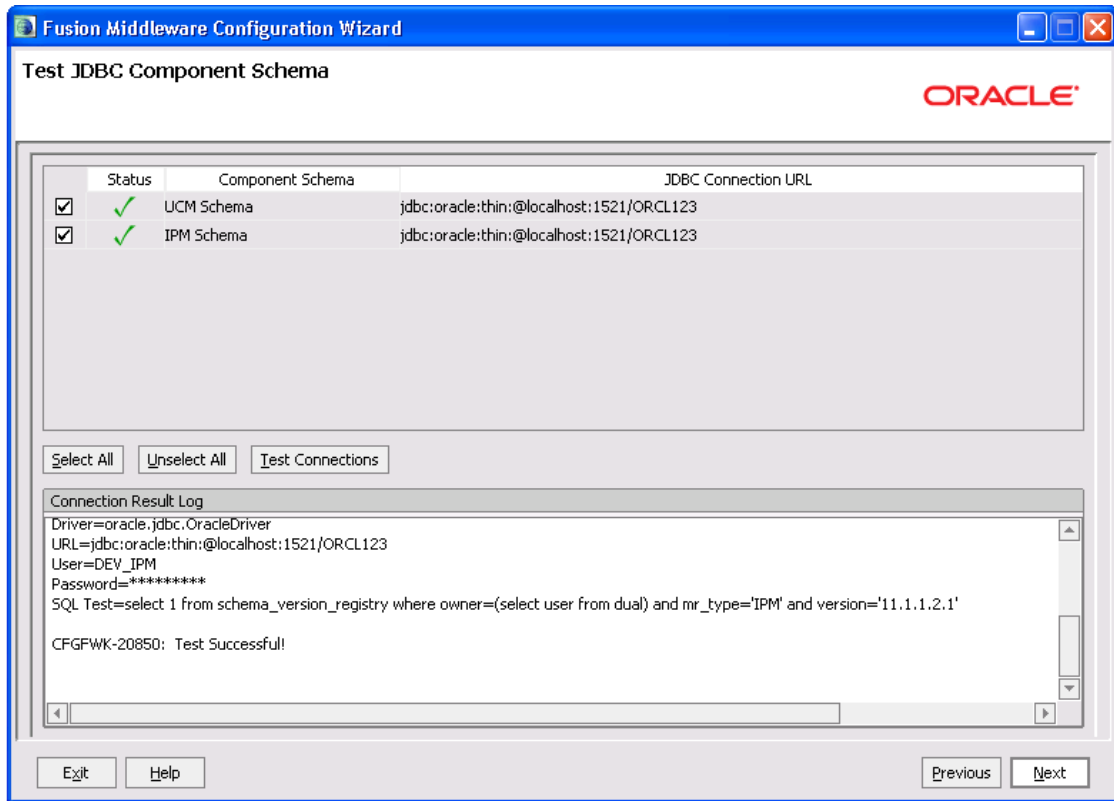
Configure selected component schemas as RAC multi data source schemas in the next panel.

	Component Schema	DBMS/Service	Host Name	Port	Schema Owner	Schema Password
<input checked="" type="checkbox"/>	UCM Schema	service_name	localhost	1521	DEV_OCS	*****
<input checked="" type="checkbox"/>	IPM Schema	orcl	localhost	1521	DEV_IPM	*****

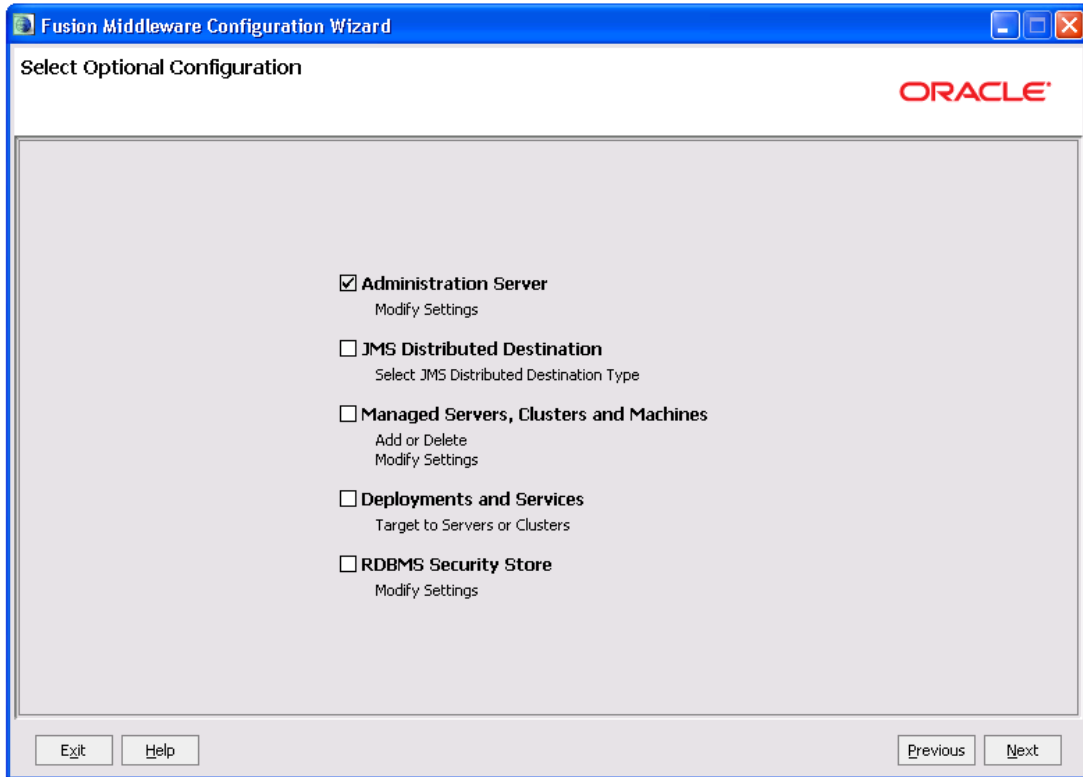
Exit Help Previous Next

6. Provide the db parameters used during schema creation(RCU Utility)
7. Specify your hostname and schema password of both UCM and IPM schema. Also specify the correct DBMS/Service name.

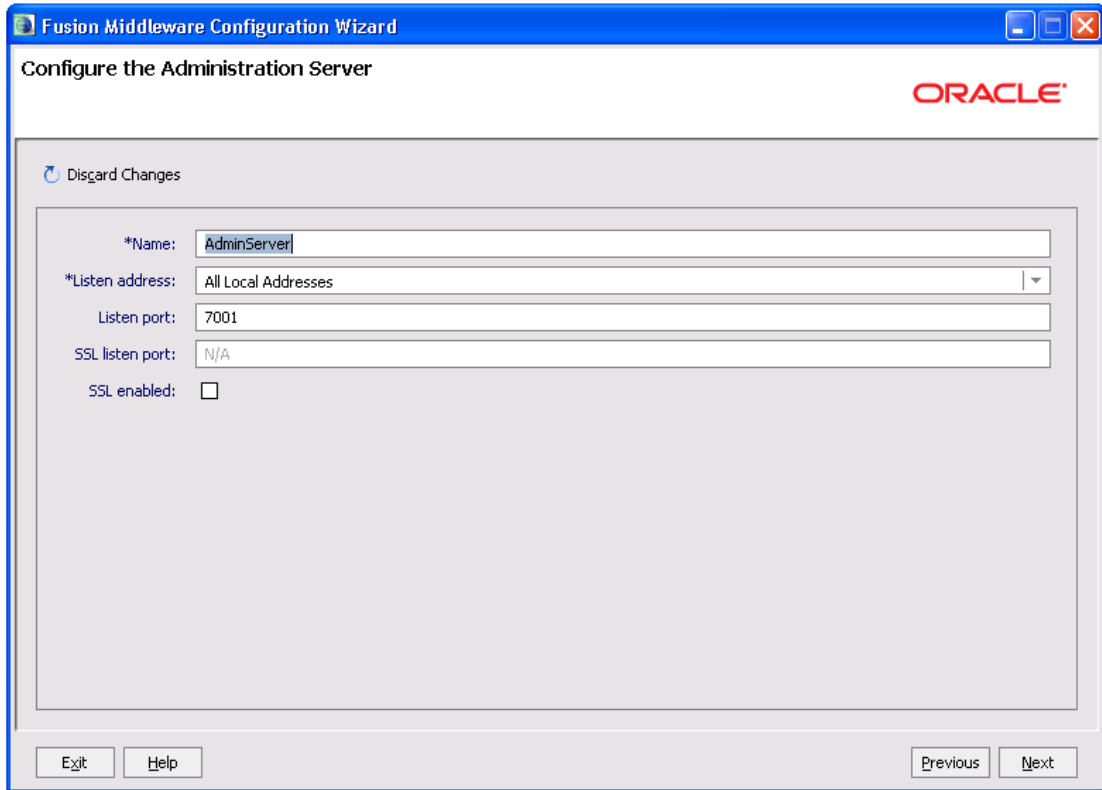




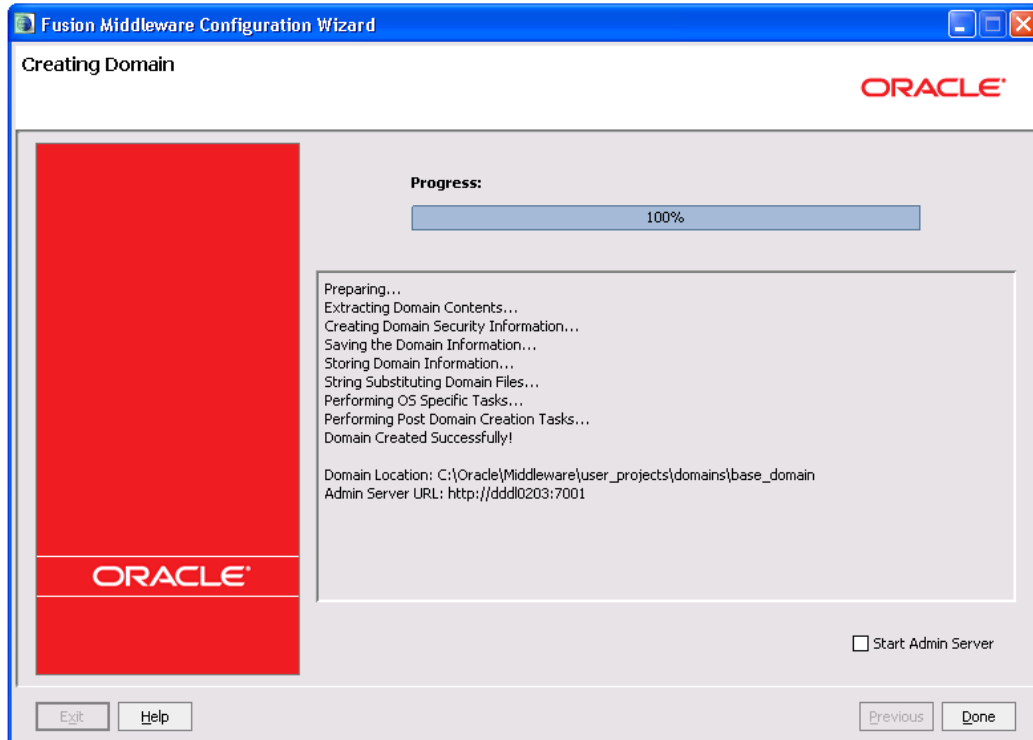
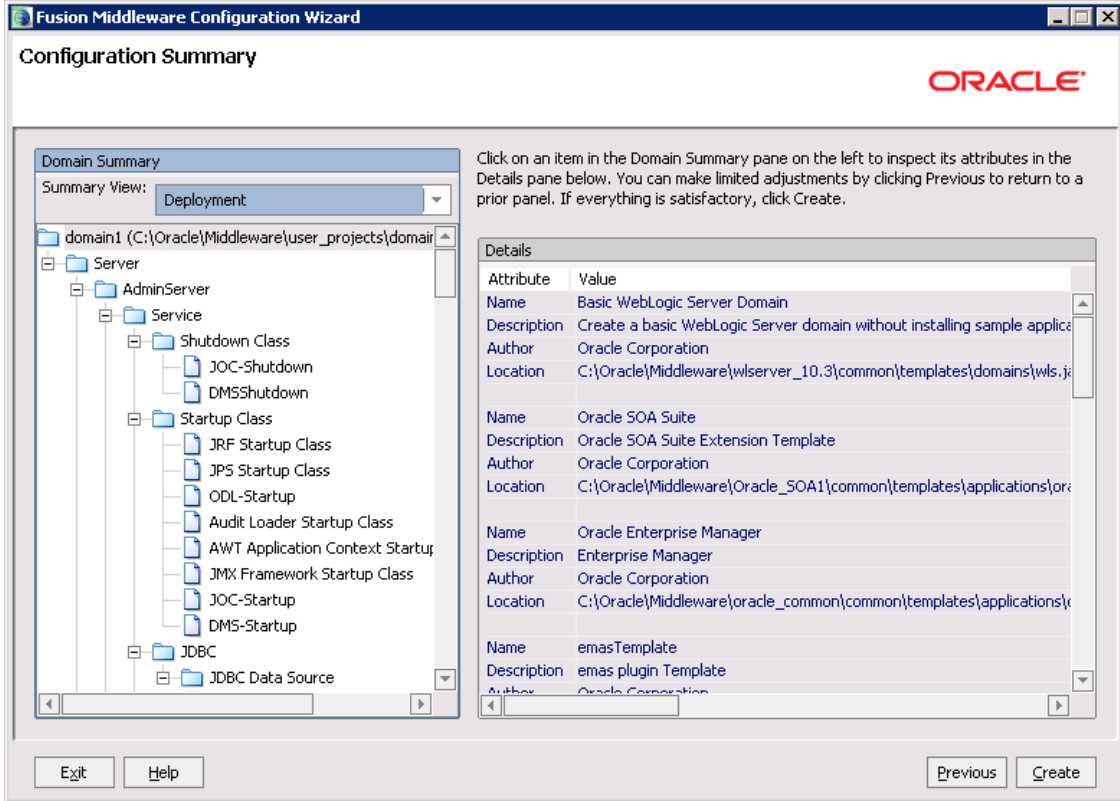
8. Test the database connectivity



9. Select the Administration Server



10. Configure the admin server.



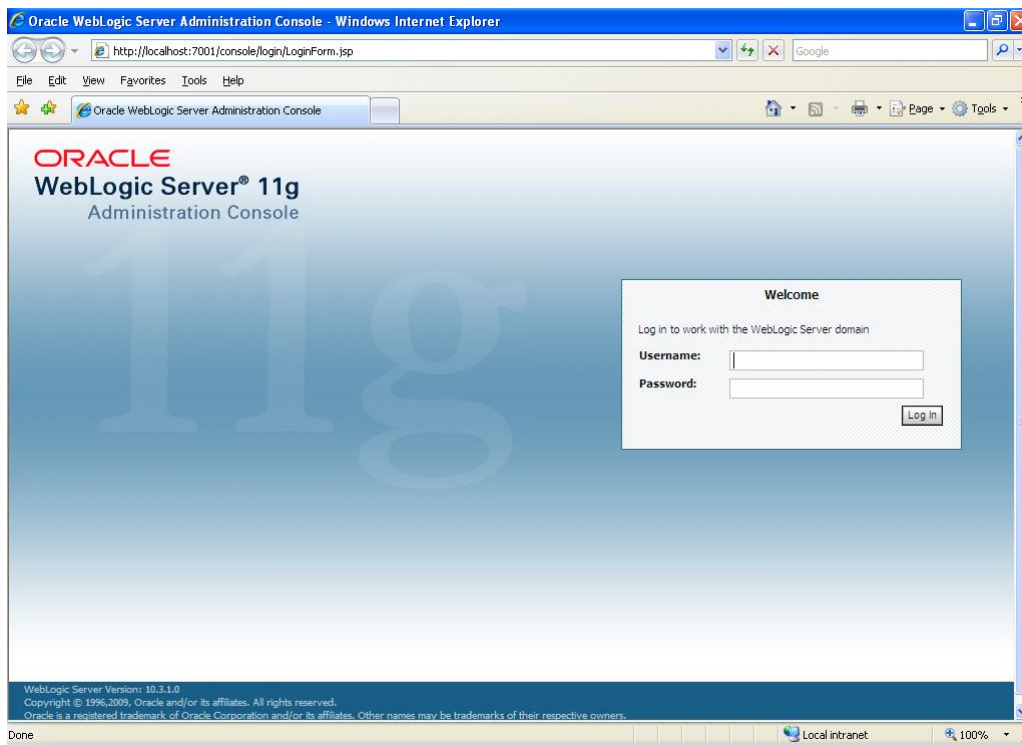
---

## 5. Checking the Deployment Summary

1. Open the Administrative Console of WEBLOGIC SERVER:
2. Open an internet browser and type the WEBLOGIC Admin Console URL Address of the server.

e.g.: <http://localhost:7001/console>.

The following screen is displayed:



3. Login to Administrative Console.
4. Enter WEBLOGIC administrator username/password and press Login.



5. Click on deployments.
6. Also, start managed servers UCM\_server1 and then IPM\_server1 through command prompt.

For ex: C:\Oracle\Middleware\user\_projects\domains\domain2\bin\startManagedWebLogic.cmd  
<UCM server name>

C:\Oracle\Middleware\user\_projects\domains\domain2\bin\startManagedWebLogic.cmd <IPM  
server name>

The screenshot shows the Oracle WebLogic Server Administration Console interface. The main content area is titled "Summary of Deployments" and contains a table of installed applications. The table has columns for Name, State, Health, Type, and Deployment Order. All listed applications are in an "Active" state with a "Health" of "OK".

Name	State	Health	Type	Deployment Order
df.oracle.businesseditor(1.0,11.1.1.2.0)	Active		Library	100
df.oracle.domain(1.0,11.1.1.2.0)	Active		Library	100
df.oracle.domain.webapp(1.0,11.1.1.2.0)	Active		Library	100
DMS Application (11.1.1.1.0)	Active	OK	Web Application	5
jms	Active	OK	Enterprise Application	400
email	Active		Library	100
emas	Active		Library	100
emcoco	Active		Library	100
FMW Welcome Page Application (11.1.0.0.0)	Active	OK	Enterprise Application	5
imaging	Active	OK	Enterprise Application	400
jsf(1.2.1.2.9.0)	Active		Library	100
jspx(1.2.1.2.0.1)	Active		Library	100
ohw-rcf(S,5.0)	Active		Library	100
ohw-un(S,5.0)	Active		Library	100
Oracle UCM Help	Active	OK	Web Application	225

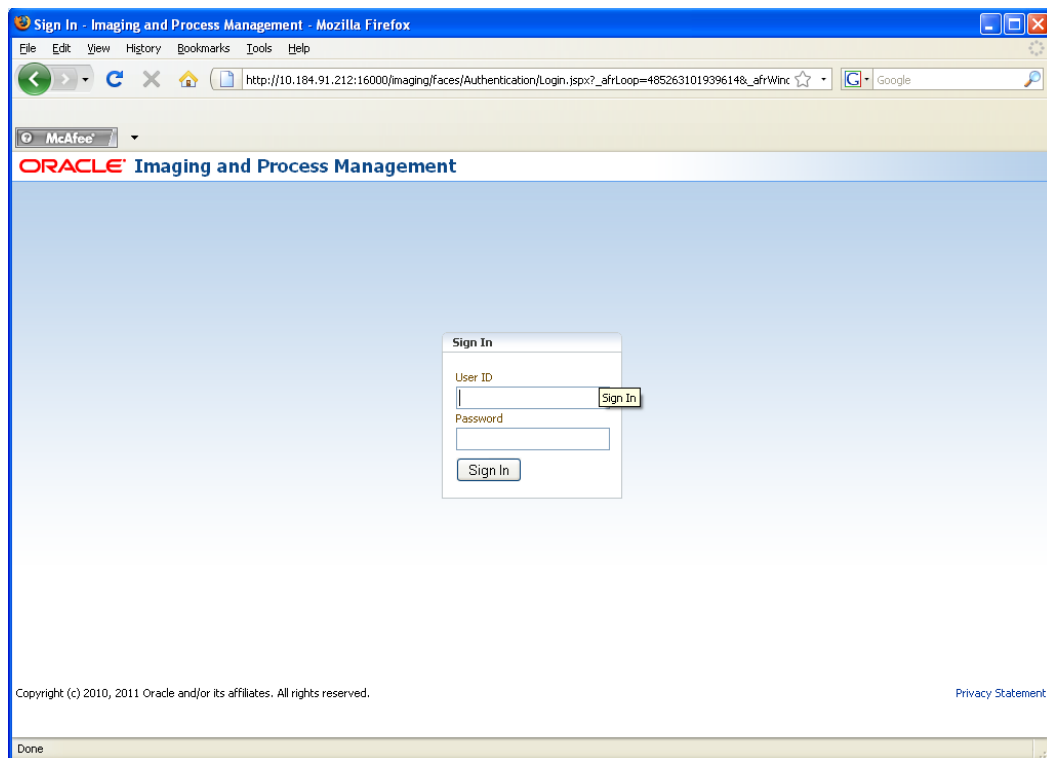
7. Imaging application should be up and running.

## 6. Creating FLEXCUBE Application

1. Open the Imaging application:

<http://<ip address>:16000/imaging>.

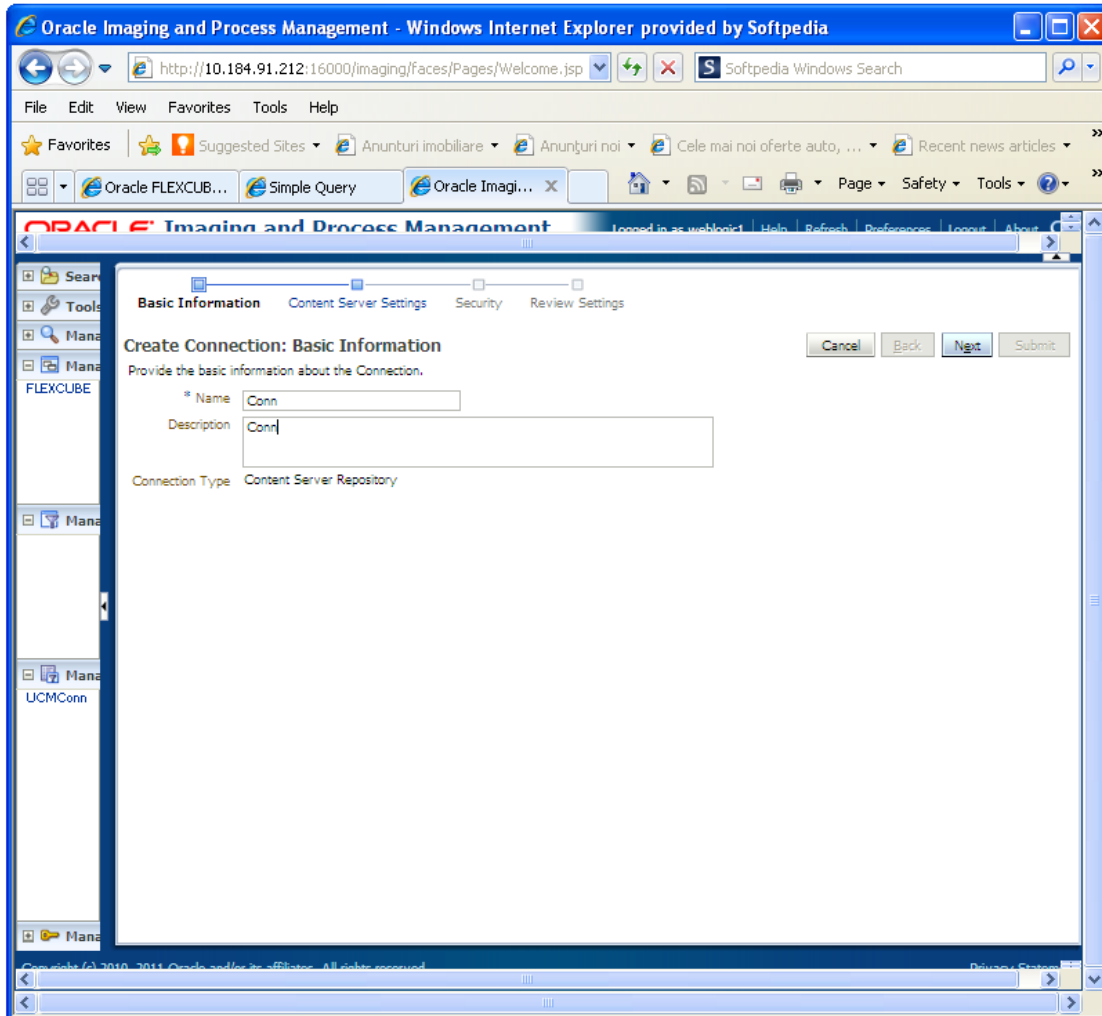
The following screen is displayed:

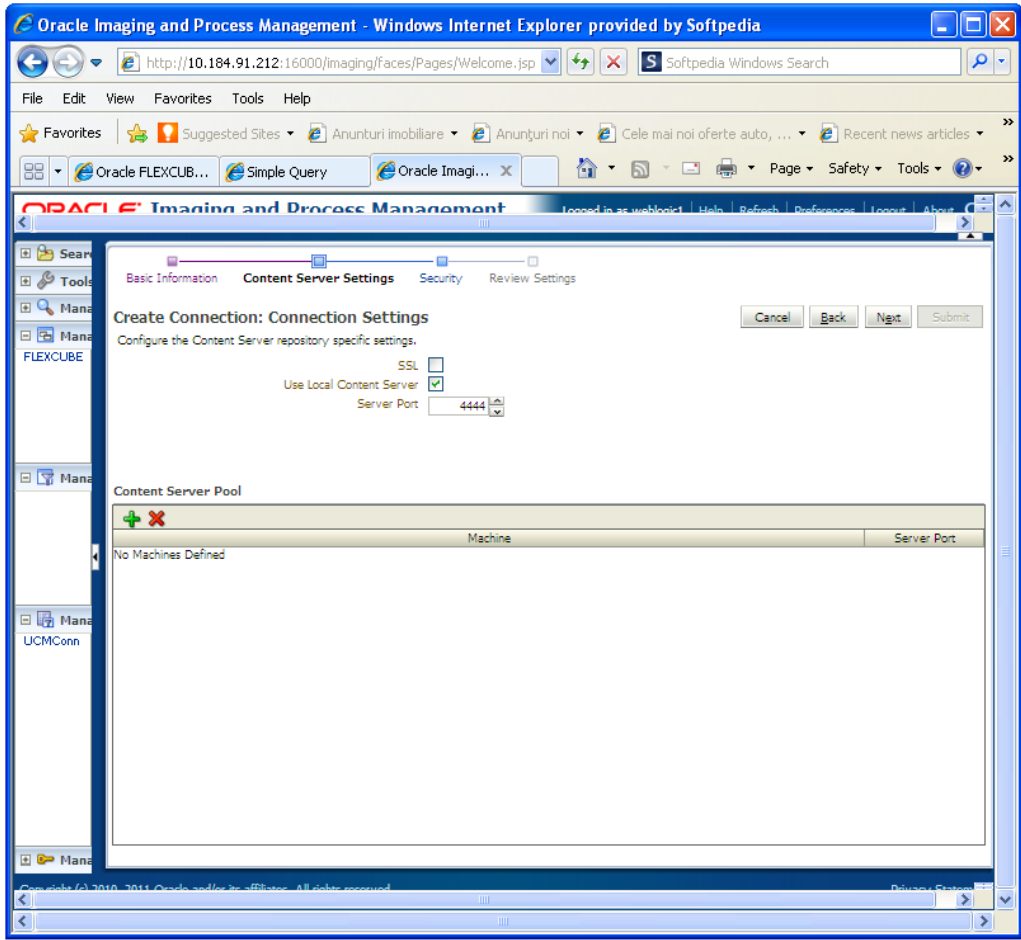


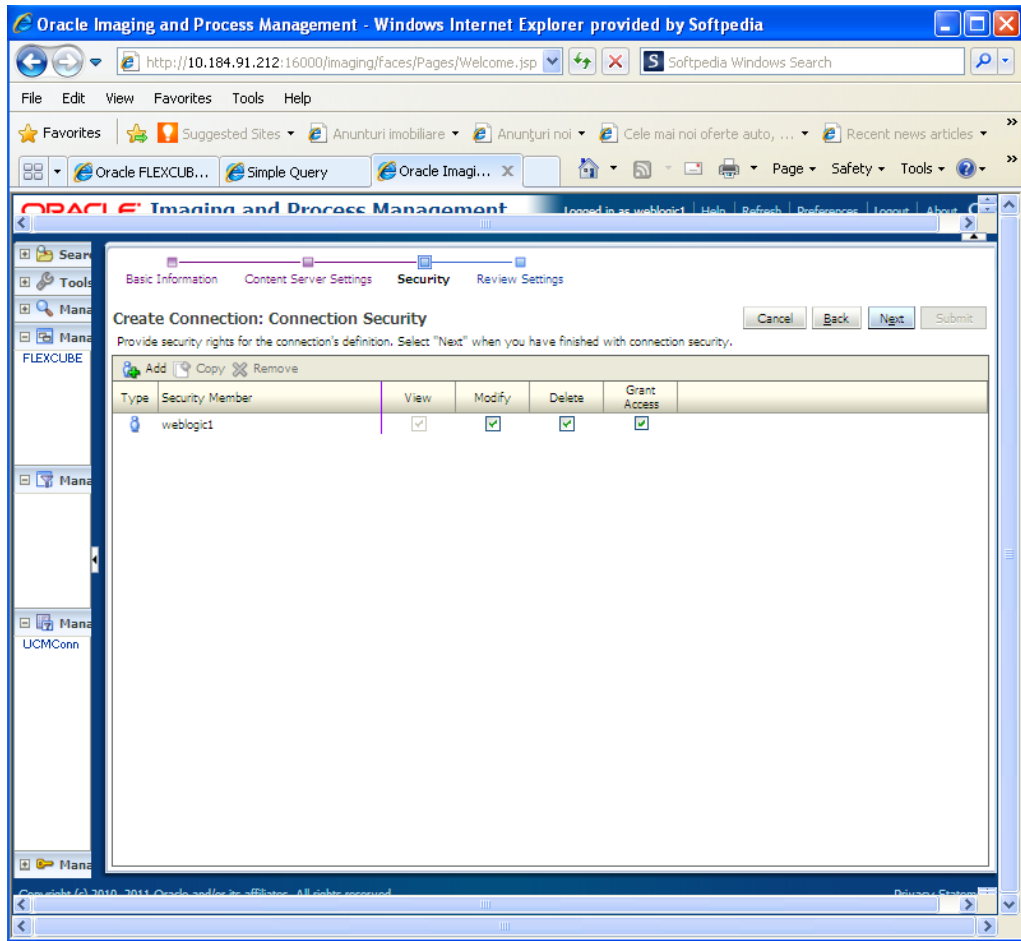
2. Login to imaging application.
3. Enter username/password and press Login.

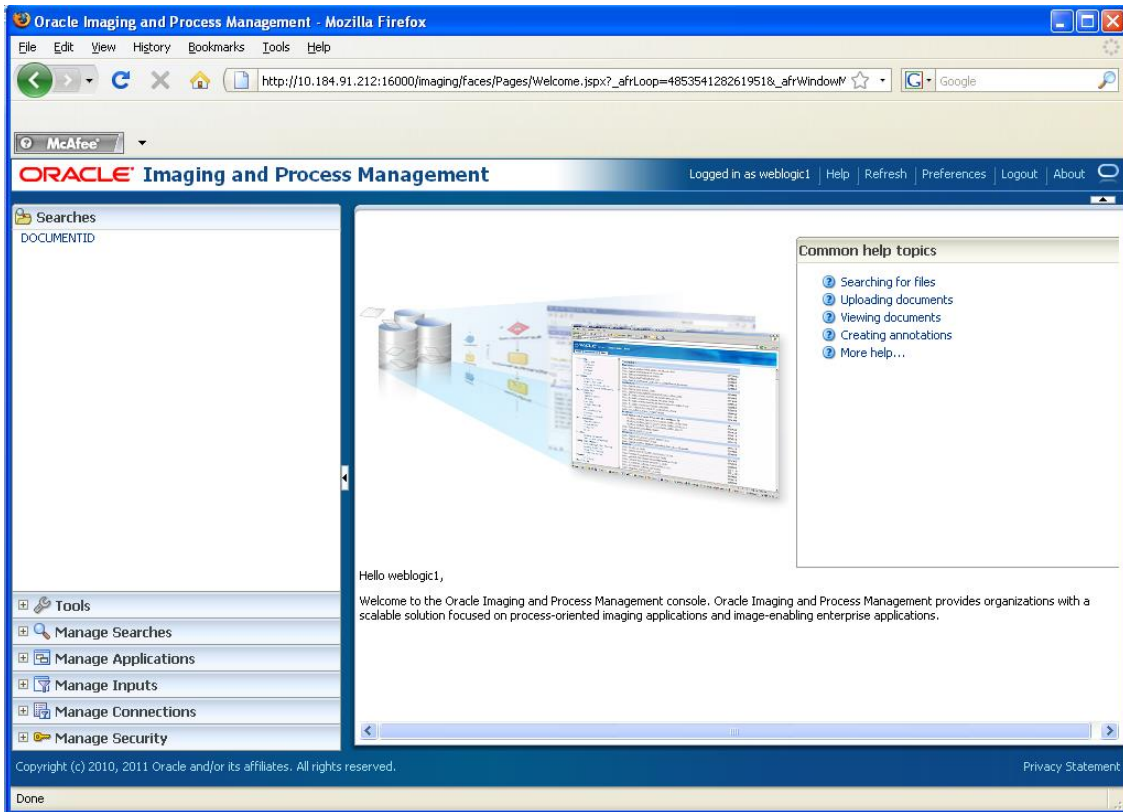


4. Click on Manage Connections.
5. Click on Create Content Server Connection.

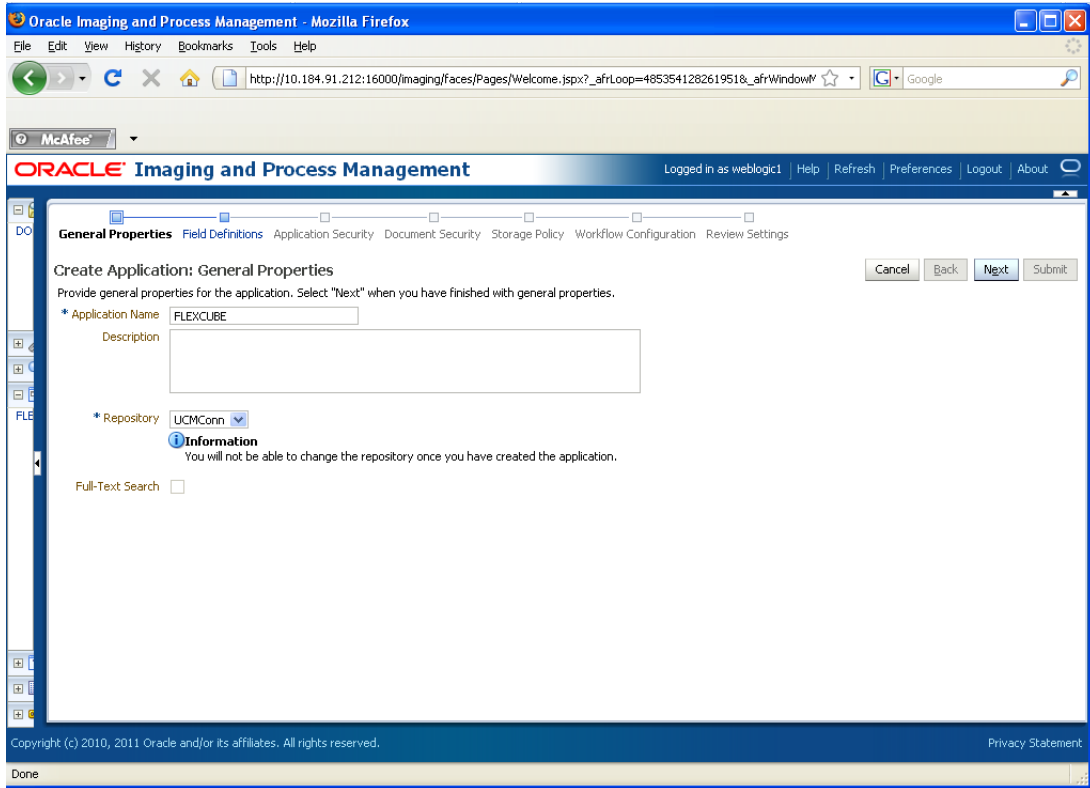




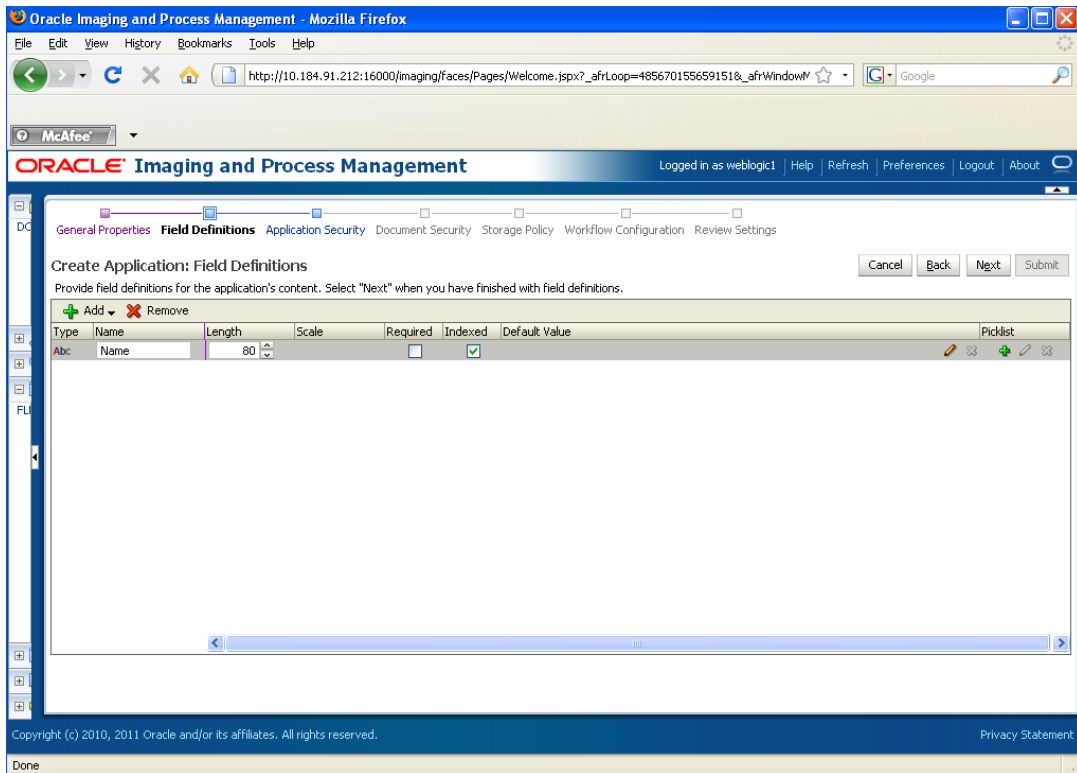


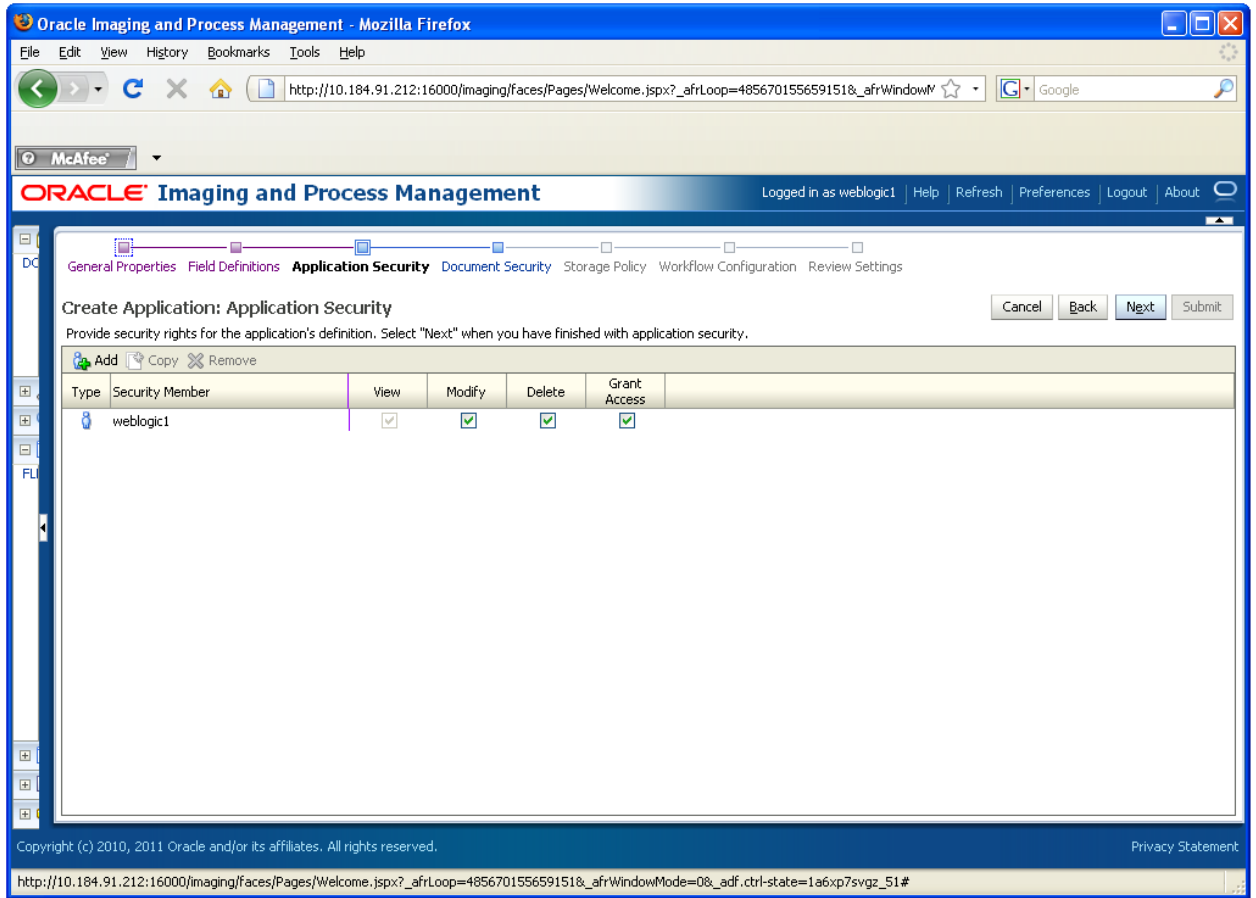


6. Click on Manage Applications.
7. Click on add application.

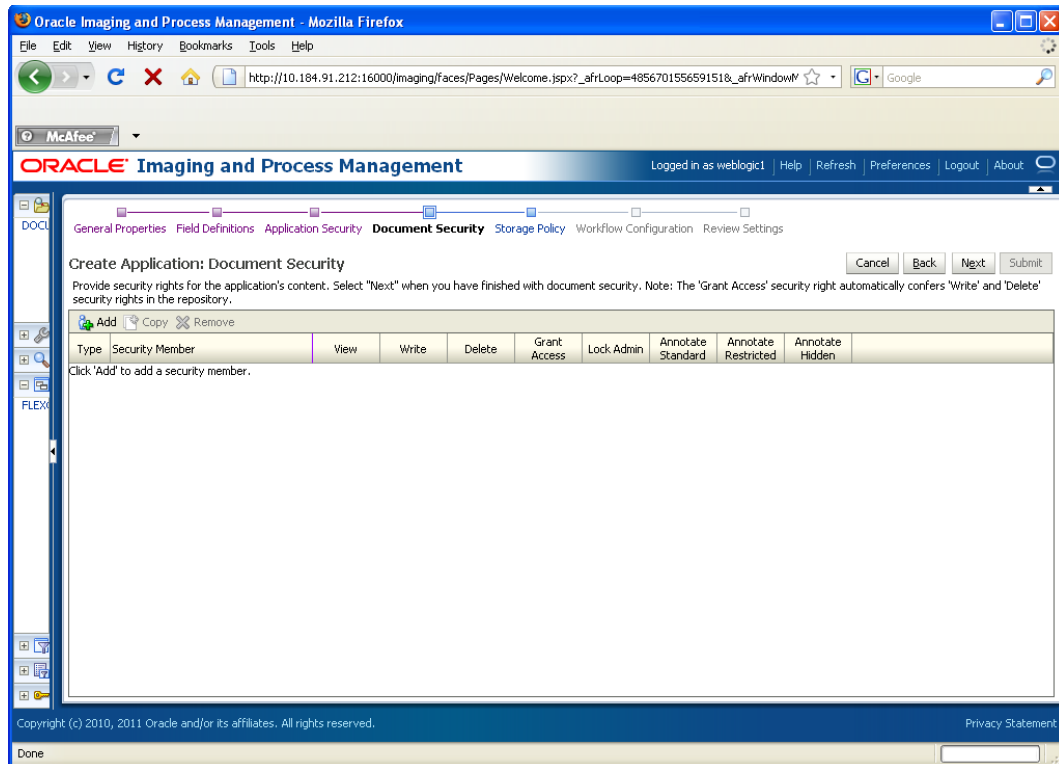


8. Click on 'Next' and add a field name 'Name'.





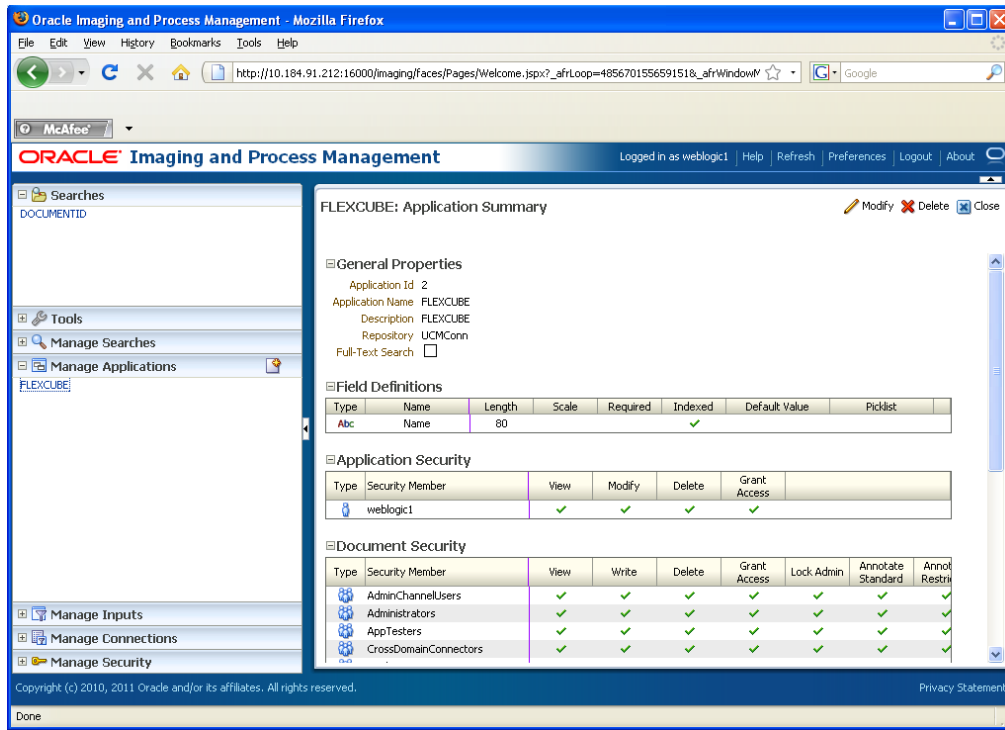
9. Click on 'Next'.



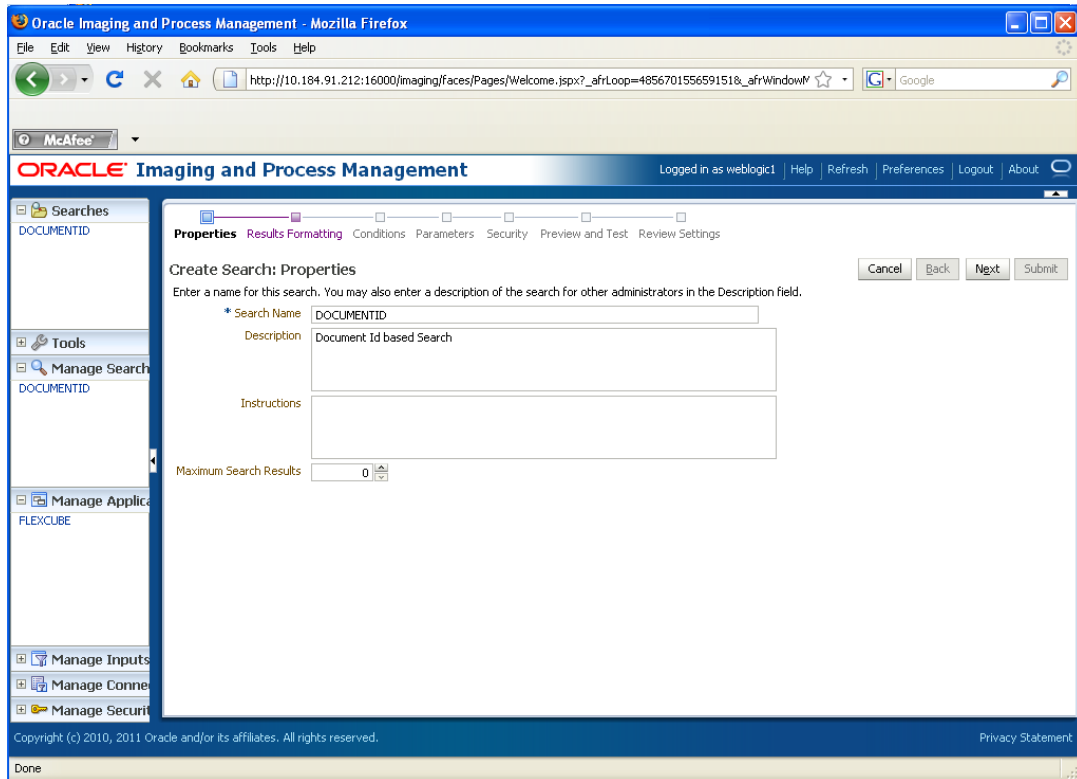
10. Add security member giving all rights.

11. Click on 'Next' .

Application Summary appears as:

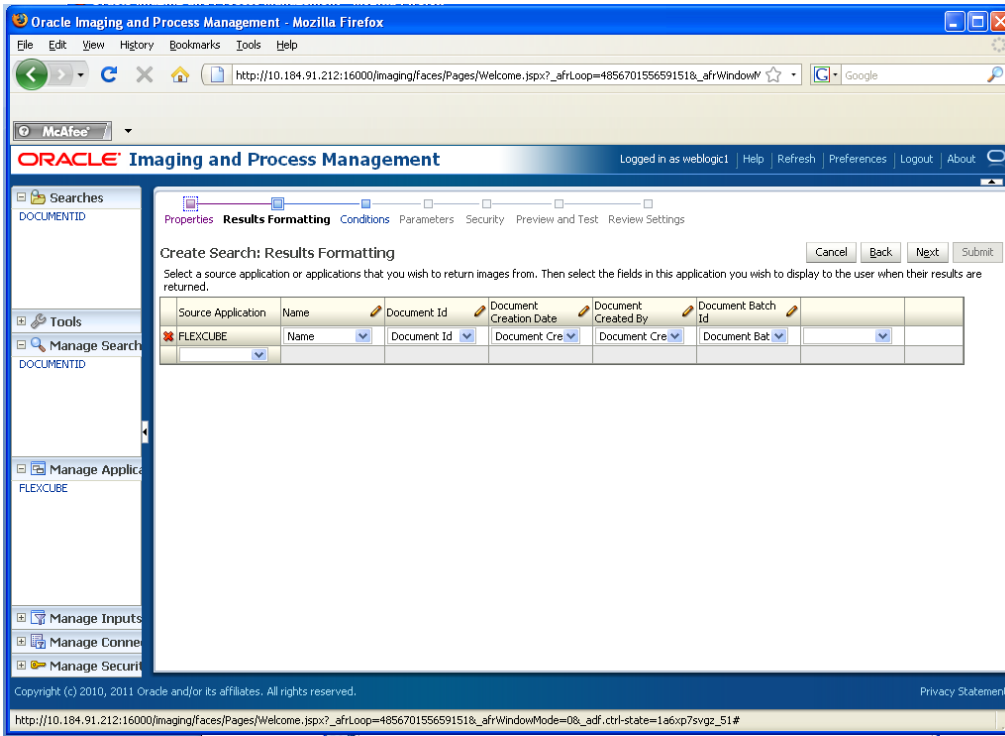


12. Click on 'Manage Searches' to add a search for DocumentID.

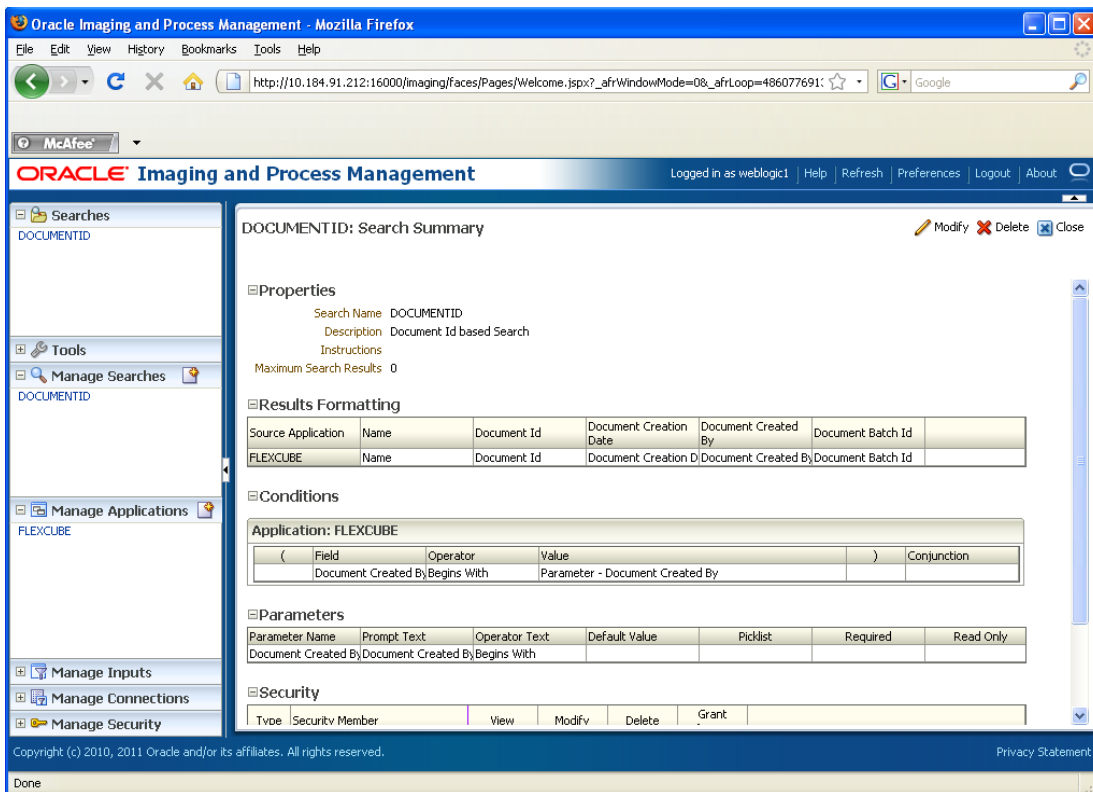


13. Click on 'Next' and add all the details as shown:

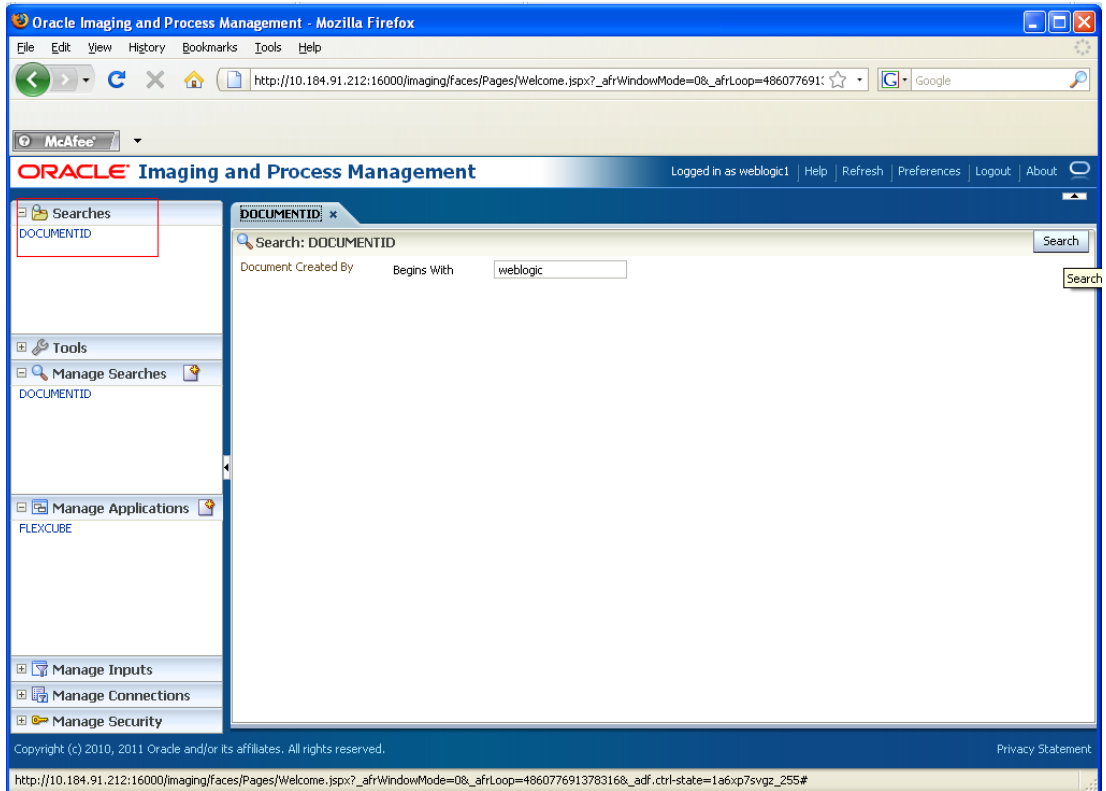




The following screen appears after creation:



14. Click on Searches tab as shown and you will get the following screen .Type weblogic and click 'search' button.



The following screen appears which contains all the documents that are uploaded.

Oracle Imaging and Process Management - Mozilla Firefox

File Edit View History Bookmarks Tools Help

http://10.184.91.212:16000/imag/faces/Pages/Welcome.jspx?\_afWindowMode=0&\_afLoop=486077691

McAfee

**ORACLE** Imaging and Process Management Logged in as weblogic1 | Help | Refresh | Preferences | Logout | About

Searches  
DOCUMENTID

Tools  
Manage Searches  
DOCUMENTID

Manage Applications  
FLEXCUBE

Manage Inputs

Manage Connections

Manage Security

**DOCUMENTID** x

Search: DOCUMENTID  [Search]

Document Created By Begins With

View [v] | Email | Open | Lock | Unlock | Update | Download | Copy | Move | Delete | Detach

Name	Document Id	Document Creation D	Document Created By	Document Batch
	2.IPM_000325	2/23/2012	weblogic1	0
	2.IPM_000324	2/23/2012	weblogic1	0
	2.IPM_000322	2/23/2012	weblogic1	0
	2.IPM_000321	2/23/2012	weblogic1	0
	2.IPM_000320	2/23/2012	weblogic1	0
	2.IPM_000319	2/23/2012	weblogic1	0
	2.IPM_000317	2/23/2012	weblogic1	0
	2.IPM_000316	2/23/2012	weblogic1	0
	2.IPM_000315	2/23/2012	weblogic1	0
	2.IPM_000314	2/23/2012	weblogic1	0

Rows returned: 96

Copyright (c) 2010, 2011 Oracle and/or its affiliates. All rights reserved. Privacy Statement

Done



UCM Server Setup  
[May] [2019]  
Version 14.3.0.0.0

Oracle Financial Services Software Limited  
Oracle Park  
Off Western Express Highway  
Goregaon (East)  
Mumbai, Maharashtra 400 063  
India

Worldwide Inquiries:  
Phone: +91 22 6718 3000  
Fax: +91 22 6718 3001  
<https://www.oracle.com/industries/financial-services/index.html>

Copyright © [2007], [2019], Oracle and/or its affiliates. All rights reserved.

Oracle and Java are registered trademarks of Oracle and/or its affiliates. Other names may be trademarks of their respective owners.

**U.S. GOVERNMENT END USERS:** Oracle programs, including any operating system, integrated software, any programs installed on the hardware, and/or documentation, delivered to U.S. Government end users are "commercial computer software" pursuant to the applicable Federal Acquisition Regulation and agency-specific supplemental regulations. As such, use, duplication, disclosure, modification, and adaptation of the programs, including any operating system, integrated software, any programs installed on the hardware, and/or documentation, shall be subject to license terms and license restrictions applicable to the programs. No other rights are granted to the U.S. Government.

This software or hardware is developed for general use in a variety of information management applications. It is not developed or intended for use in any inherently dangerous applications, including applications that may create a risk of personal injury. If you use this software or hardware in dangerous applications, then you shall be responsible to take all appropriate failsafe, backup, redundancy, and other measures to ensure its safe use. Oracle Corporation and its affiliates disclaim any liability for any damages caused by use of this software or hardware in dangerous applications.

This software and related documentation are provided under a license agreement containing restrictions on use and disclosure and are protected by intellectual property laws. Except as expressly permitted in your license agreement or allowed by law, you may not use, copy, reproduce, translate, broadcast, modify, license, transmit, distribute, exhibit, perform, publish or display any part, in any form, or by any means. Reverse engineering, disassembly, or decompilation of this software, unless required by law for interoperability, is prohibited.

The information contained herein is subject to change without notice and is not warranted to be error-free. If you find any errors, please report them to us in writing.

This software or hardware and documentation may provide access to or information on content, products and services from third parties. Oracle Corporation and its affiliates are not responsible for and expressly disclaim all warranties of any kind with respect to third-party content, products, and services. Oracle Corporation and its affiliates will not be responsible for any loss, costs, or damages incurred due to your access to or use of third-party content, products, or services.